

# Meadowlark

A JOURNAL OF ILLINOIS BIRDS

*Volume 2, Number 4*



W.MARCISZ '93

# Illinois Ornithological Society

**Publisher**

Illinois Ornithological Society

**Chief Editor**

Sheryl De Vore

**President**

Eric Walters

**Vice-President**

David B. Johnson

**Recording Secretary/  
Treasurer**

Michael Hogg

**Board of Directors**

Laurence C. Binford

Robert T. Chapel

Judy K. De Neal

Todd Fink

Ronald E. Goetz

David B. Johnson

W. Douglas Robinson

Eric Walters

David Willard

**Associate Editors**

Judy K. De Neal

Chuck Hutchcraft

David B. Johnson

**Art Editor**

Denis Kania

**Staff Illustrators**

David Athans

Leslie A. De Coursey

Walter Marcisz

Brian K. Willis

**Graphics/Layout**

Kathy Ade

**Photographer**

Joe B. Milosevich

**Letter from the editor**

Native Americans in Illinois once watched and imitated in ritualistic dance the annual courtship of the Greater Prairie-Chicken. Males of this state-endangered avian species fan their tails, strut their feet, and inflate their colored sacs to attract females in a well-choreographed display.

Today, most of us will never have the chance to see the Greater-Prairie Chicken in Illinois. Indeed, it is difficult to imagine that in 1915 the birds actually nested in Mundelein, the town where I live. Now, there is no hope that the prairie-chicken could ever return to northern Illinois.

The only hope remains in a small area in southern Illinois where scientists are struggling to maintain a viable population. In this issue, the last of three devoted to our state-endangered birds, associate editor Judy K. DeNeal writes about the history of the Greater Prairie-Chicken in Illinois.

Scientists are unsure whether it is too late for this species to survive here. What is certain is that if we are not careful, other avian species will soon follow the path of the Greater Prairie-Chicken.

*Sheryl De Vore*

**Proofreader**

Laurel Ann Kaiser

**Membership Secretary**

Barbara Walters

**Printing**

Ed Barresi, Reprox

4667 McRee

St. Louis, Missouri 63110

**Editorial Advisory Board**

Laurence C. Binford

Dale Birkenholz

H. David Bohlen

Kenneth J. Brock

Victoria J. Byre

Robert T. Chapel

Todd Fink

Ronald E. Goetz

Scott Hickman

L. Barrie Hunt

Vernon M. Kleen

Scott K. Robinson

W. Douglas Robinson

Robert Szafoni

David Willard

# MEADOWLARK

*A Journal of Illinois Birds*

Volume 2, Number 4 - Spring 1994

ISSN 1065-2043

## President's Message

Each spring, about the time waterfowl are amassing in the backwaters, lakes, and marshes in Illinois, the male Greater Prairie-Chickens are strutting out from the hedgerows and brush cover to declare their territories and make an appeal for a mate. This community gathering each March is a wonderful experience for bird watchers lucky enough to witness it.

IOS members will be gathering in late spring, too, for the annual meeting which we are planning right now. We hope to see you there to reminisce about the past year's bird watching experience as well as celebrate the beginning of our third year. Stay tuned for more information.

*Eric Walters*

## About Our Cover

Walter Marcisz drew the cover illustration of a female Greater Prairie-Chicken with two young. Marcisz is a staff illustrator for *Meadowlark*. His illustrations have appeared in *Birding*, *Compass*, and *The Chicago Birder*.

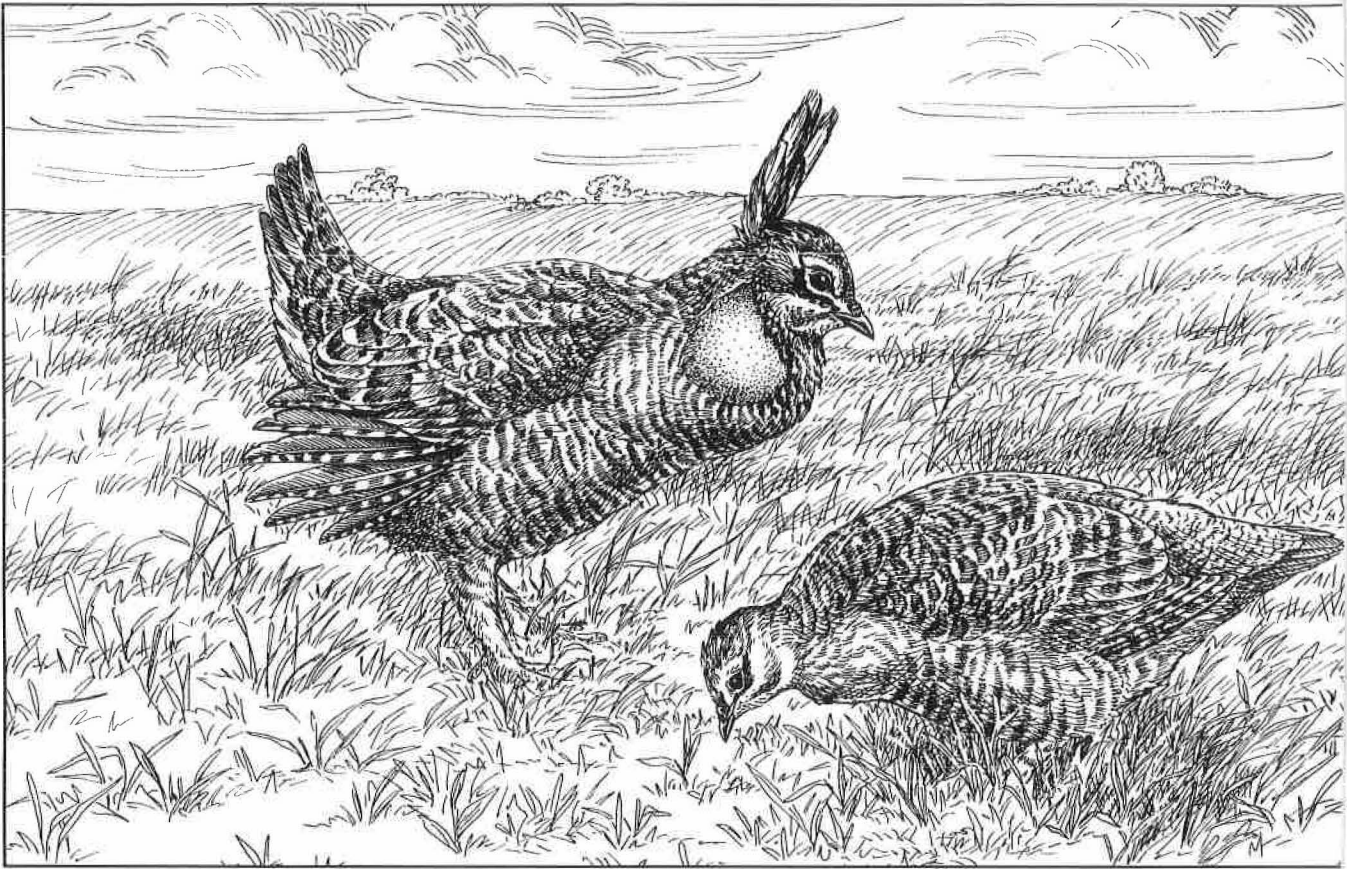
Copyright by the Illinois Ornithological Society. No part of this journal may be reproduced without the written permission of IOS and the chief editor, except for brief passages of a paragraph or less in which attribution is made to the journal and author.

## Articles

- The Greater Prairie-Chicken in Illinois** 122  
- Judy K. De Neal
- Painted Bunting:** 127  
**First Confirmed State Record**  
- Ben Gelman
- Townsend's Warbler** 129  
**at the Chicago Botanic Garden**  
- James Steffen

## Departments

- Bird Finding Guide** 131  
Chicago Botanic Garden  
-Dr. Laurence Binford
- Feeder Station** 135  
Homemade Feeders  
- Sue Friscia
- Seasonal Highlights/Spring** 138  
Glossy Ibis, Yellow Rail, Black-legged Kittiwake,  
Arctic Tern, Chestnut-collared Longspur
- Field Notes** 142  
Spring 1993  
- Eric Walters



---

## The Greater Prairie-Chicken

---

A mild breeze set the grasses swaying on a warm May day at dawn. The dozen or so volunteers at the Marion County Greater Prairie-Chicken Sanctuary heard the flight calls of a pair of Upland Sandpipers. Some of us watched a female Northern Harrier working on a nest in a field of redbud grass. All the while, the bubbling songs of Bobolinks competed with the whistles of Eastern Meadowlarks, Northern Bobwhites, Red-winged Blackbirds, and Song, Field, and Grasshopper Sparrows.

We lined up at the south end of a 20-acre plot, armed with walking

sticks to part briary tangles and dense grass clumps that might hide the nest of a Greater Prairie-Chicken (*Tympanuchus cupido*). Ten years ago there was a sense of merriment in this annual ritual. Each time a nest was located, the finder would shout "Bingo," which was then rewarded with a quarter. Locating three nests in a row earned the finder an additional quarter. By day's end, a sharp-eyed searcher might have earned enough to buy a hamburger, fries, and soda.

On this day, we flushed a meadowlark from her domed ground nest and watched prairie voles and other small rodents skitter for cover. Sud-

denly, our line stopped moving. There on the ground was a handful of brown and buff feathers. "Well, they're prairie-chicken feathers, that's for sure," said Ron Westemeier, a wildlife ecologist with the Illinois Natural History Survey. "It's one of our precious hens," he said.

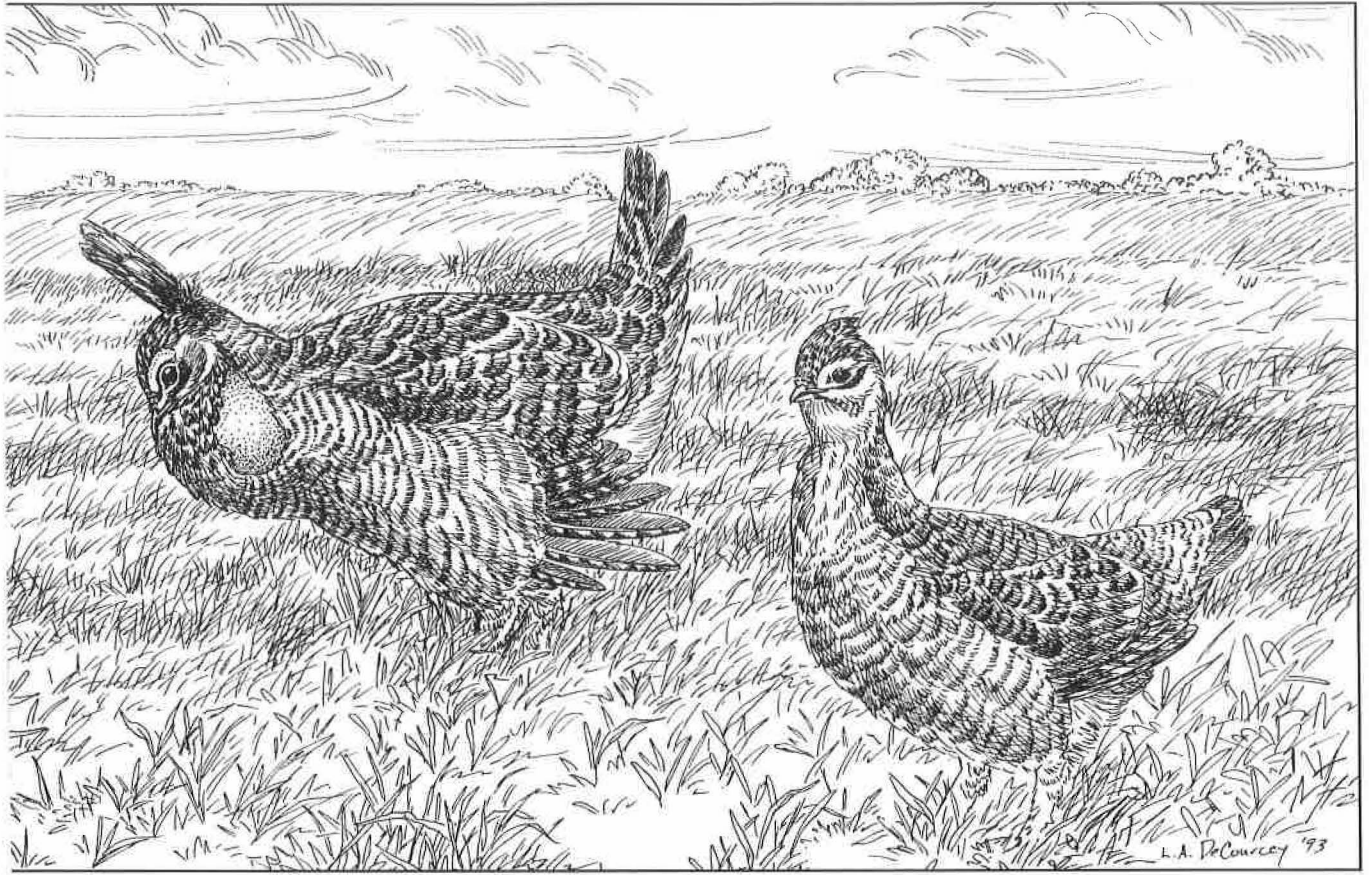
But we found no prairie-chicken nests that day. And no one shouted "Bingo."

### Early History

The history of the prairie-chicken in Illinois has recorded great fluctua-

Meadowlark





Greater Prairie-Chicken males and females on lek. Drawing by Leslie A. DeCoursey.

---

## in Illinois

---

By Judy K. De Neal

tions due to changing land practice and competition among species. Robert Ridgway scarcely mentioned the prairie-chicken in his 1889 *Ornithology of Illinois*, suggesting it would be like carrying coals to Newcastle, so common was the species. But it hadn't always been so.

The prairie-chicken found the eastern tall-grass prairie no more hospitable than did the early settlers. The grasslands were hot in summer, cold in winter, and subject to dangerous fires. Early settlers, suspicious of land "too poor to grow trees," preferred to homestead forested areas along rivers and streams where good

water, timber, and game were plentiful. The clearings yielded to the plow more readily than did the deep-rooted prairie sod. Historical accounts show prairie-chickens moved from the prairies into cut-over woodland fields to become pests to crops (Westemeier and Edwards 1987).

It is not clear what the population was before the 1850s, although records indicate chickens were widely distributed throughout the tall-grass prairie region of Illinois. Early settlers said prairie-chickens were numerous, while P. L. Hatch stated that a hunter in 1836 would be lucky to shoot a dozen in a day (Westemeier

1985). During the winter of 1830-31, in Sangamon County, Rev. J. G. Bergen reported "thousands and thousands of prairie-chickens died as a result of being trapped in deep snow under a crust of ice." During the 1840s, a hunter named McCormack bagged 160 birds in one day and two men killed 48 chickens in just two hours near Danville (Galbreath 1982).

### Population Boom

The real population boom came after the invention of the self-scouring plow. Settlers lost little time convert-

ing the wide, wild prairie to a checkered pattern of grain fields, pastures, and hayfields — unwittingly creating a game haven. The “substitute prairie” provided grassy cover essential for nesting and roosting and crop fields offered copious food (Yeatter 1943).

By 1853 prairie-chickens were measured at Chicago markets by the cord and ton. A hunter could make a good living providing chickens for the table. One, H. Clay Merritt, reported that flocks of chickens a half mile long were common in northern Illinois. When the ground was covered with snow, prairie-chickens would sit wing-to-wing atop fences stretching for miles (Lockhart 1960). Hunters were eagerly sought by farmers, who offered free food for both the hunter and his horse (Westemeier 1985).

Live birds were also sent to market. Merritt recalled one family who captured 500 birds in a single week by setting traps in their garden (Lockhart 1960). Nests were so concentrated in some areas that collecting from 100 to 500 eggs within a half mile area was not remarkable (Westemeier 1985). In 1873, a Chicago company received and sold 25,000 birds. That year alone 600,000 prairie-chickens were bought to Chicago at \$3.25 per dozen (Leopold 1949).

## Population Decline

In 1881, hunters were advised that the best shooting was west of Illinois, despite the presence of large flocks in several areas of the state. But the prairie-chicken population, which may have peaked with possibly as many as 14 million birds as early as the 1850s, was already declining (Westemeier 1985). The hunting season was closed for two years, in 1887 and 1889, reopened and finally closed in 1933.

William Hornaday, director of a New York zoo and a tireless critic of hunting excesses stated in his 1904 book, *The American Natural History*:

“The prairie-chicken lives chiefly in the memories of those who from 1860 to 1875 were ‘Wisconsin men’ or boys. Railroads were few, all guns were muzzle-loaders, and the game-dealers of Chicago were not stretching out their deadly tentacles, like so many long-armed octopi, to

---

**‘When the ground was covered with snow, prairie-chickens would sit wing-to-wing atop fences stretching for miles.’**

---

suck the last drop of wild blood from prairie and forest. Today the prairie-chicken is to be numbered with the buffalo and passenger-pigeon. It is so nearly extinct that only a few flocks remain, the most of which are in Kansas and Nebraska. It is useless to describe this bird. The chances are that no reader will ever see one outside a museum.”

Hornaday added that many birds were also killed each winter when they flew into telegraph wires.

Despite Hornaday’s indictment of hunters, the plummeting of prairie-chicken populations was more due to changing in land use. In the early 1900s, tractors replaced horses and hayfields giving way to larger crop fields. The once-favorable prairie-chicken habitat began to disappear. Yet prairie-chickens hung on in 92 out of 102 counties as late as 1912, according to research by Dr.

Stephen A. Forbes (Westemeier 1985).

During the Great Depression, the chickens got a reprieve. The Cropland Adjustment Act of 1934 and 1935 was the first in a series of programs designed to take land out of cultivation, thereby decreasing supply and increasing price of grains. Cropland was returned to grassland. Once again the landscape took on the checkered look that favored the prairie-chicken (Westemeier and Edwards 1987).

## Pheasant Interference

But then came another factor in the life equation of the prairie-chicken: the Ring-necked Pheasant, an Asian species, introduced into what were once exclusively chicken habitats. Pheasant cocks interfered with chicken cocks on the booming grounds, but more significantly, pheasant hens became nest parasites. A prairie-chicken egg requires about 25 days incubation; a pheasant only 23 days. The chicken hen leaves the nest the day after pipping begins, so if the first chick is a pheasant, the hen may abandon her own unhatched eggs, and begin brooding surrogate chicks. The effect on chickens was devastating (Westemeier and Edwards 1987).

Researchers also suspect that due to pheasant interference on the booming ground, some chicken hens began laying eggs before copulation. This disruption may lower embryo survival in unparasitized nests and may also cause increased nest desertion.

Today, a remnant population survives only in the gray prairie region in southeastern Illinois, mostly in Jasper and Marion counties. The gray prairie soil, characterized by light-colored silt loams and poorly drained, tight clay subsoils was ideal for growing grasses such as redbud

Meadowlark

(*Agrostis alba*). Redtop seed became the main cash crop, as the area produced 85 percent of the world's seed and 95 percent of the U.S. crop during the 1930s (Yeatter 1943).

Harvest of the seed did not begin until mid-July, leaving the grassland undisturbed during the nesting season. By the time the seed was ready for harvest, young chickens were usually mature enough to escape the machinery.

Other upland species, many which are now listed as threatened or endangered, were common then in the gray prairie region. Ralph Yeatter of the Natural History Survey believed the area had maintained its native fauna better than any other part of the state, noting the abundance of Northern Bobwhite, Upland Sandpiper, Northern Harrier, Henslow's Sparrow, and Grasshopper Sparrow.

When grain prices increased after World War II and the redtop market began to fail, farmers in the gray prairie region found it cost efficient to lime the soil, add fertilizer, and grow corn and soybeans. As grasslands were put to the plow, chickens lost nesting cover and the population dwindled. By the late 1950s it became clear that farmers forced to choose between a good cash crop and prairie-chickens were not choosing chickens. By 1960 the birds were gone from all areas except Jasper and Marion Counties. In 1962, the population was estimated to be about 2,000. Three years later about 300 birds remained (Westemeier 1885).

## Protecting the Prairie-Chicken

Under Yeatter's leadership, individuals representing conservation groups and sportsmen formed the Prairie-Chicken Foundation of Illinois. Private donations were collected and in 1962 land was purchased for a

permanent sanctuary. Another group, the Prairie Grouse Committee of the Illinois Chapter of the Nature Conservancy, became the major acquirer of sanctuaries beginning in 1966. As donations came in, more land was either leased or purchased. When the foundation disbanded in 1971, sanctuaries were either donated to the Department of Conservation or con-

---

**'By the time the seed was ready for harvest, young chickens were usually mature enough to escape the machinery.'**

---

signed, with the payments due, to the Nature Conservancy. Today there are 1,361 acres in Jasper County and 760 in Marion County.

The birds responded well to habitat improvement. The highest densities ever recorded occurred on sanctuary lands in the 1970s (Westemeier 1985). Still, predators, nest parasitism, human disturbance, and increasing infertility and embryonic mortality have kept the flocks small enough to be vulnerable to unforeseen hardships.

A commercial egg production facility in Marion County which spreads manure (and possibly diseases) from 600,000 laying hens on fields near sanctuary land may have caused the demise of some booming grounds. Tragedy struck in 1990 when several farmers illegally spread rodenticide-treated grain (toxic to chickens if eaten) on no-till fields adjacent to Marion County sanctuary land. Although no carcasses were recovered, the population dropped dramatically with no corresponding

change in Jasper County (Westemeier 1990).

A current concern to biologists has been declining egg quality. Each spring most of the young hens arriving on the booming grounds are the offspring of the dominant cocks. Inbreeding may have become a significant factor limiting the population. Eggs have been successfully swapped between nests in Jasper and Marion flocks to add genetic diversity. "New blood" was also introduced in 1991. In the summer of 1992, 15 Minnesota hens, each equipped with a tiny transmitter, joined the Jasper County flock.

During that winter, close monitoring revealed the birds spent most of the time off sanctuary land in corn stubble, even roosting there at night. Showing a preference for wide open spaces, chickens shunned fields near trees where avian predators might lurk. Overhead powerlines surrounding sanctuary lands continue to take a toll. Two hens suffering impact injuries were discovered in the spring of 1993. Both died. Such accidents are believed to account for 10 percent of deaths.

While providing habitat for prairie-chickens, these sanctuaries have also offered suitable living and nesting quarters for some of Illinois' other threatened and endangered species. Migrating American Bitterns, Yellow Rails, and Henslow's Sparrows stop on sanctuaries for short periods and may nest. About 15 pairs of Upland Sandpipers and several Northern Harriers nest there each year. Harriers and Short-eared Owls spend winters there drawn by the abundance of prairie voles and southern bog lemmings. In 1993, a pair of owls stayed to nest for only the second time since the sanctuaries were established. Loggerhead Shrikes are permanent residents. King Rails have nested at least twice, once as recently as 1993.

Prairie flora as well as fauna have

been favored by management practices. Although cool season grasses dominate, one 40-acre tract reverted to prairie when more than 60 species of 19 families emerged following prescribed burning and brush and tree removal. Seed grown on this tract is collected and used in restoration planting on other tracts (Westemeier 1991).

Far-sighted members of the Greater Prairie-Chicken Foundation

of Illinois and the Illinois Chapter of the Nature Conservancy likely never anticipated their conservation efforts on behalf of the prairie-chicken would have so positive an effect on so many of Illinois' threatened and endangered species. Good grassland management and further habitat enhancement on the sanctuaries are vital to maintaining the prairie-chicken, but will also benefit various grassland species.

Work done on the sanctuaries goes beyond merely maintenance of a single species; it is a restoration of an increasingly rare ecosystem. As the needs of many grassland species are met on the sanctuaries, Yeatter's claim in 1943 that southeastern Illinois has held on to its native species better than any other area in the state may still hold true 50 years later.



## Literature Cited

Galbreath, J. W. 1982. Drumbeats. Bland Books. Fairfield, IL.

Leopold. 1966. A Sand County Almanac. Oxford University Press.

Lockhart, J., 1960. The Prairie Boomer. Outdoors In Illinois. Vol. 7, No. 2.

Westemeier, R. L. 1985. The history of prairie-chickens and their management in Illinois. Selected

Papers in Illinois History, 1983. Fourth Annual Illinois History Symposium of the Illinois State Historical Society, Springfield, IL.

Westemeier, R. L. and W. R. Edwards. 1987. Prairie-chickens: Survival in the Midwest. Restoring America's Wildlife 1937-1987. U.S. Dept. of the Interior, Fish and Wildlife Service. Sup. Documents, U.S. Govt. Print Office, Washington, D.C.

Westemeier, R.L. 1990. Prairie-Chicken Research Report to Co-operators. 1990.

Westemeier, 1991. New Residents on Sanctuaries. Illinois Natural History Survey Reports, No. 306.

Yeatter, R. E., The Prairie-Chicken in Illinois. Illinois Natural History Survey Bulletin 22, 1943.

---

## AVIAN ANNALS

An historic look at spring birding in Illinois by Eric Walters

### *75 years ago:*

One of the stated aims of a local bird society was to "discourage the wearing of any feathers except those of the ostrich and domestic fowls" (Audubon Bulletin 4:47).

### *55 years ago:*

The strong early spring winds brought an amazing 2,000 Lapland Longspurs to Cook County's McGinnis Slough during mid-February (Bird Lore 40:224).

### *40 years ago:*

A mid-April freeze apparently killed many male Purple Martins which reduced the number of this species "as much as 50 percent near Chicago" (Audubon Field Notes 7:276).

Gradual north/northeastern range

expansions were noted for the Summer Tanager and European Tree Sparrow (Audubon Field Notes 7:276).

### *35 years ago:*

An article on optics was titled, "Advantages of 6X30 Binoculars." The heavy wartime binoculars sold for \$25. "These binoculars are superior to the cheap imports now flooding the market," the author wrote (Audubon Bulletin 103:15).

### *25 years ago:*

A Chicago reporter traveled downstate to report on the "advancing spring" where his "happiest experience of all was meeting a nesting Wood Duck at Chautauqua National Wildlife Refuge" (Chicago Tribune, April 24, 1968 editorial).

Yellow-headed Blackbirds ap-

peared at some new Illinois locations: Quincy, East Moline, and two areas in McHenry County (Audubon Field Notes 22:533).

### *20 years ago:*

Record spring rains caused the Little Meredosia Levee near Hillsdale to break creating a 12-mile long lake extending toward Lake Michigan. The resulting habitat attracted numerous birds including "300 to 600 Sora Rails" during the first three days of May (Illinois Audubon Bulletin 166:25).

### *10 years ago:*

The Cattle Egret was located in a record 44 counties on the Spring Bird Count. The previous record was 12 counties (Illinois Audubon Bulletin 206:19).



Male Painted Bunting, 22 April 1993, Jackson County. Photo by Dennis Oehmke.

## Painted Bunting: First Confirmed State Record

by Ben Gelman

As Southern Illinois Audubon Society's birding hotline contact person, I was not surprised to get a phone call 21 April 1993 from Ann Minckler, an avid bird feeder who lives about a mile from me in Makanda Township, Jackson County.

"I've had a couple of unusual birds at one of our backyard feeders since yesterday," she said. "I wonder if you could come over and take a look at them."

"Can you give me a clue?" I asked. It's often possible for me to make an identification by phone, but that was not to be the case this time.

"Well, one of them is a Blue Grosbeak and I'm pretty sure the other one is a Painted Bunting (*Passerina ciris*)."

The Blue Grosbeak is a regular, if uncommon, summer resident in

southern Illinois. But a Painted Bunting? I was skeptical. The south to southwestern species has been

---

**'The species normally occurs as close to Illinois as Tennessee and southern Missouri. But no confirmed sightings had been made in Illinois.'**

---

known to visit feeding stations for sunflower seeds in southern U.S. backyards (Terres 1991). The species normally occurs as close to Illinois as Tennessee and southern Mis-

souri. But no confirmed sightings had been made in Illinois (Bohlen 1989).

Several reports that have been made for the prairie state were either one-observer sightings or lacked sufficient details. One report was from a roadside in Wabash County (1889), one from Decatur (1963), one from a feeder in Chicago (1967), and one from Urbana (1967).

Confirmation of Minckler's sighting would make the Painted Bunting an official state first. Obviously, I was compelled to visit her backyard for confirmation.

I arrived at 5 p.m. It was about 65 degrees and plenty of light was still available for accurate observation. I parked my car to face the back of the house where several feeders were hanging. Minckler's yard consists of

a few tall pines and some hardwoods and shrubbery. Sunlight shines on the feeders in late afternoon.

Without getting out of the car, I trained my 10x40 Zeiss roof prism binoculars on the feeders. Immediately, I spotted the Painted Bunting. I had seen the species before in Florida and had no doubts that this was an adult male. The species is often referred to as "nonpareil," which means without equal (Bull and Farrand, Jr., 1985). Indeed, it is the most brilliantly, if not gaudily-plumaged bird in North America.

The sparrow-sized bird at Minckler's feeder was similar in shape to an Indigo Bunting which is

abundant in southern Illinois during spring and summer. The head was violet-blue. The upper back was bright yellowish green. The rump and breast were dull red. Wings and tail were mostly dark.

I observed the bird for about 10 minutes as it sat in the feeder hunched over, moving very little and munching steadily on seeds. The bird could have been blown north of its normal migration route since moderately strong thunderstorms with southwest winds moved through the area a few days earlier.

I notified Vernon Kleen, heritage biologist with the Illinois Department of Conservation in Springfield, and

Todd Fink, a DOC biologist at Fern Clyffe State Park in southern Illinois. Kleen notified H. David Bohlen, who came from Springfield the next morning with Dennis Oehmke to photograph the bird. Fink and Judy K. DeNeal of Harrisburg also saw the bird which remained at the Minckler feeders until the evening of 22 April 1993.

Incidentally, the Blue Grosbeak, also an adult male, appeared at one of the Minckler's other feeders while I was watching the Painted Bunting. Minckler certainly was not understating it when she said "that was quite an unusual three-day period."

## Other Nearby State Records

---

Recent Midwest records could indicate that the species is expanding its range (Mumford and Keller 1984).

The first Wisconsin record was a male seen 23 April 1942 along the Lake Michigan shoreline in Milwaukee. Subsequent records include a male in Douglas County 12-16 May 1983; a female or immature that flew into a garage in Door County 27 November 1983; and two different males discovered 12 May 1984 at feeders in Racine. Nine separate sightings of the Painted Bunting have been documented for Wisconsin (Robbins 1991).

An adult male specimen purport-

edly collected by Fletcher M. Noe in Indianapolis 12 April 1886 and housed in the California Academy of Science may be invalid because Noe falsified some of his data. (Mumford and Keller 1984). A dead male Painted Bunting was discovered next to the City County Building in Indianapolis 5 May 1983.

Minnesota has four records, all in May: 2 May 1893, probably an escaped bird; 12 - 15 May 1965, Cook County; 27-28 May 1969, Cottonwood County; and 18 May 1986, Nobles County (Janssen 1987).

Michigan has several records including a bird observed and photo-

graphed 5 May 1968 in Marquette; a bird at a feeder 2 May 1973, St. Clair County; April 1961, Houghton County; 30 April 1966, Benton Harbor, Berrien County; and a female 15 September 1973 at Grand Mere, Berrien County (Payne 1983).

Interestingly, the bird is on the hypothetical list for Kentucky with only one historical record in August 1892 (Monroe, Jr. et. al. 1988).



Ben Gelman  
Southern Illinois Audubon Society  
Box 1257  
Carbondale, IL 62903

## Literature Cited

---

Bohlen, H. D. 1989. *The Birds of Illinois*. Indiana University Press. Bloomington, Indiana.

Bull and Farrand, Jr. 1985. *The Audubon Society Field Guide to North American Birds*. Alfred A. Knopf, Inc., New York.

Janssen, R.B. 1987. *Birds in Minnesota*. University of Minnesota

Press. Minneapolis, Minnesota.

Mumford, R.E. and Keller C.E. 1984. *The Birds of Indiana*. Indiana University Press. Bloomington, Indiana.

Payne, R.B. 1983. *A Distributional Checklist of the Birds of Michigan*. University of Michigan. Ann Arbor, Michigan.

Robbins, S.D. 1991. *Wisconsin Birdlife*. The University of Wisconsin Press. Madison, Wisconsin.

Terres, John K. 1991. *The Audubon Society Encyclopedia of North American Birds*. Wings Books. New York.



# Townsend's Warbler at The Chicago Botanic Garden

By James Steffen



'At first I thought it was another Black-throated Green, but the clear yellow throat and yellow face surrounding a dark face patch suggested something I had never seen before.'



I was conducting an early morning bird survey on 6 May 1993 at the Chicago Botanic Garden in Glencoe, Cook County, prior to undertaking my other duties of woodland restoration. Spring migration was exceptional at the Garden that year and by the time I arrived at the north end of the cottonwoods adjoining our nursery, I was greeted by what had become common during the last few weeks - dozens of flitting warblers and a symphony of bird song. Yellow, Palm, Yellow-rumped, and Black-throated Green Warblers comprised the matrix of the warbler mixture.

While watching a small group of Black-throated Greens moving from the brushy fence row along the golf course to the cottonwoods behind our pole barn, I noticed a lone bird low in the hawthorns beneath the cottonwoods. At first I thought it was another Black-throated Green, but

*Female Townsend's Warbler, 6 May 1993, Chicago Botanic Garden, Cook County. Photo by Margot Merrick. (Left)*

*Female Townsend's Warbler, 6 May 1993, Chicago Botanic Garden, Cook County. Photo by Margot Merrick. (Right)*

the clear yellow throat and yellow face surrounding a dark face patch suggested something I had never seen before. Could it be a Yellow-throated Warbler? This seemed like a good choice since I had never seen a Yellow-throated Warbler.

I made a field sketch, consulted a field guide, and summoned Laurence Binford who had been wanting to see a Yellow-throated Warbler at the Garden. While waiting for Binford, I decided the bird didn't match the field guide picture of a

Yellow-throated Warbler. This bird's face was yellow not white. But what else could it be?

When Binford arrived we began searching for the bird but could not find it. Then Binford called me to the south end of the cottonwoods where he said he had not found the Yellow-throated Warbler but an even better bird.

It was the same bird I had seen earlier. Perhaps it was a western warbler.

Indeed it was. Binford and I agreed that we were looking at a female Townsend's Warbler (*Dendroica townsendi*). I called the Chicago Audubon Society birding hotline and Dave Johnson. By 12:30 p.m. Johnson and Richard and Mary Biss arrived and had relocated the bird in the same area. Later in the afternoon, others came to see the bird. James Landing and Margot Merrick also photographed this out-of-place warbler. I last saw the bird at 4:30 p.m. that day.

The Townsend's Warbler tended to remain alone. Observers noticed it associating with other warblers only when a flock passed by while feeding. The bird did not follow the warbler group as it moved to another habitat.

Although the warbler was first observed in deciduous trees, it spent most of the time feeding among pine and particularly spruce trees along the golf course fence, occasionally switching to the willows in the golf course behind the evergreens. Considering that we were able to observe 36 species of warblers at the Botanic Garden this spring, the Townsend's Warbler was just icing on the cake.

## Description and Identification

The bird had a clear yellow throat and yellow face with a dark distinct olive or gray cheek patch. The eye appeared to be separated from the cheek patch by a yellow lower half eye ring. The breast had black streaks down the sides and the belly and undertail coverts were white. The bird had a very dark gray-green to olive cap; an olive back with no obvious streaking (only faintly streaked, most noticeable on the rump); and white slats along the sides of the tail. Two white wing bars were distinct.

The three warbler species which

---

## Townsend's Discovery

When physician John Kirk Townsend was 24 years old, he and his friend Thomas Nuttall embarked on a journey hoping to become the first naturalists to cross the entire United States. As they set out on a brisk mid-March day in 1835, they were destined to discover birds that were not yet known to science.

Townsend, also a taxidermist, had already organized a collection of the birds of West Chester, Pennsylvania, according to Paul Fleischman author of *Townsend's Warbler*. But he had never traveled farther west than that.

The pair endured difficult conditions - ice cold, rugged mountains, unbearable thirst. But they continued on, collecting specimens of birds, plants, and sea creatures that had never been named.

It was along the Columbia River in Oregon that Townsend caught sight of a tiny, olive-backed, gray-winged bird with black head and throat and yellow around its eyes. Townsend shot the bird, as he and Nuttall did all the specimens they were collecting.

"None but the naturalist can appreciate a naturalists' feeling - his delight amounting to ecstasy - when a specimen such as he had never before seen meets his eye," Townsend wrote in his diary.

Nuttall named the avian species of Townsend's delight *Sylvia townsendi*, or Townsend's Warbler (today *Dendroica townsendi*). The specimen placed in Philadelphia's Academy of Natural Sciences "still serves as the type specimen, the official representative of the species," wrote Fleischman.

---

can be confused with the Townsend's Warbler are the Black-throated Green, Golden-cheeked, and Hermit Warblers (*D. virens*, *D. chrysoparia*, *D. occidentalis*). The well-defined dark auricular patch and lack of yellow on the lower belly and vent separate the Townsend's from these three. (Pyle, et al. 1987).

## Distribution

The Townsend's Warbler breeds as close as Wyoming and is a common migrant through states west of and including the Continental Divide. Any record east of the Rocky Mountains should be considered an unusual occurrence. The species is named after John Kirk Townsend, a physician and naturalist who collected the first type specimen known to science with fellow naturalist Thomas

Nuttall during the spring of 1835 along the Columbia River in Oregon.

## Other Records

This sighting represents the third accepted record for the Townsend's Warbler in Illinois. The first record was of a female seen 6 May 1980 at Jackson Park in Chicago, Cook County. The second record was of a male photographed 1-2 May 1982 in Jacksonville, Morgan County (Bohlen 1989). Other eastern sightings include New England and Ohio (DeSante and Pyle 1986), Indiana (Mumford and Keller 1984), and Minnesota (Janssen 1987). No records have yet been recorded for Michigan or Wisconsin (DeSante and Pyle 1986). Eastern records appear to be almost exclusively May observations with the exception of a bird

on 30 April in Indiana and a record under review for 3 October 1992 in Illinois. Summer and fall records have occurred for eastern North America in the eastern provinces of Canada; 9-10 June 1973 for Nova Scotia and 16 November to 13 December 1983 for Newfoundland (Godfrey 1986).

## Acknowledgements

Thanks go to David B. Johnson for providing information on Townsend's Warbler distribution and Laurence C. Binford for help in the relocation and identification of the bird.



James Steffen, ecologist  
Chicago Botanic Garden  
PO Box 400  
Glencoe, IL 60022

## Literature Cited

Bohlen, H. D. 1989. *The Birds of Illinois*. Indiana University Press, Bloomington, Indiana.

DeSante, D., and P. Pyle. 1986. *Distributional checklist of North American Birds, Vol. 1, United States and Canada*. Artemisia Press, Lee Vining, California.

Godfrey, W. E. 1986. *The Birds of Canada*.

Janssen, R. B. 1987. *Birds in Minnesota*. University of Minnesota Press, Minneapolis, Minnesota.

Mumford, R. E., and C. E. Keller. 1984. *The Birds of Indiana*. Indiana University Press, Bloomington, Indiana.

Pyle, P., S.N.G. Howell, R. P. Yunick, and D. DeSante. 1987. *Identification Guide to North American Passerines*.

## BIRD FINDING GUIDE

# The Chicago Botanic Garden

By Laurence C. Binford



*Cape May Warbler feeding on crab apple blossoms.  
Drawing by Denis Kania.*

Few places near Chicago can boast such an assortment of birds in so small an area. The 300 acres that comprise the Chicago Botanic Garden in Glencoe, a north suburb, have hosted 241 species. All but six of those have been seen within the last five years. Numerous rarities include American White Pelican, Townsend's Warbler, and Vermilion and Scissor-tailed Flycatchers. Almost any species found in the Chicago area can appear quite unexpectedly, such as the King Rail that foraged in wood chips beneath ever-

greens along a busy service road for two weeks in spring 1992.

The main attraction, however, is the variety of species, from waterfowl (27 species recorded) and raptors (14) to warblers (35), sparrows (16), and even shorebirds (20). May 11 has proved a good date for maximum species diversity, with one-party counts of 103 in 1991 and 101 in 1992, but even earlier dates can be surprisingly productive, as demonstrated by the 73 species on 18 April 1993.

The primary reason for this vari-

ety is the abundance of habitats: deciduous oak forest, patches of pines and firs, fruit-bearing ornamental trees and shrubs, tall-grass and short-grass prairies, a seasonal prairie pond, deep and shallow lakes with seasonally muddy shores, a brush-lined creek, and a wide expanse of open sky that provides viewing of migration.

## Spring

Spring, with 228 species recorded, is the best season for birding at the Garden. Seeing birds actively migrating either northward or engaging in "reverse" migration is perhaps the most exciting aspect of Garden birding, especially after a long winter! Migration, which begins in early to mid-March and escalates well into May, is best observed during the first three hours after dawn (the earlier the better) from the small pull-off just southeast of the gravel hill prairie (Figure 1, near 16).

A steady stream of blackbirds and robins is typical. Depending on the time of year, birders can also find other species such as cormorants, egrets, Mourning Doves, Blue Jays, warblers, sparrows, meadowlarks, Bobolinks, and even Northern Orioles and Scarlet Tanagers mixed in.

Birding from this vantage has produced, in an hour or two, such outstanding spring counts as 24 Great Blue Herons, 23 Green-backed Herons, 267 Sandhill Cranes, 23 Killdeers, 40 Lesser Yellowlegs, 150 Common Nighthawks, 9 Belted Kingfishers, and 16 Northern Flickers.

Diurnal raptors can be seen from the same place but mostly between 10 a.m. and 1 p.m. Days with strong west or southwest winds are best. Most raptors avoid the Garden itself, passing over the golf course to the east or the woods far to the west, so bring a scope. Peregrine Falcons and

Merlins have been seen overhead. High counts have included 6 Ospreys, which feed in the adjacent lakes, and 52 Sharp-shinned, 13 Cooper's, and 130 Broad-winged Hawks.

The prairies (16) support sparrows, which may be numerous (for example, counts of 49 Song and 52 Swamp Sparrows), and other grassland birds, even an occasional Upland Sandpiper or Short-eared Owl. Beyond the wooden bridge on Marsh Island (21) is a temporary pond, accessible by a boardwalk, which harbors rails, Common Snipe, and other shorebirds. The rails often hide under or run along the boardwalk. The low point projecting southward from the bridge attracts shorebirds when mud is exposed. The pond and point should be visited as early in the morning as possible before visitors flush the birds.

A small intermittent creek follows the east boundary fence from the southeasternmost lake to Turnbull Woods (19). The stand of cottonwoods and willows near the green maintenance barn (22), which has standing water through April, the adjacent brush-lined creek, and the clump of hawthorns just to the north along the west side of the road, can be fruitful, especially in April before Turnbull leafs out. Early in the morning these tall trees are better than Turnbull, because the sunlight strikes them first, activating the insects and hence birds. Beware of the orange-marked electrical fences used to deter deer.

The best part of Turnbull Woods is adjacent to the main creek and pond near the bridge, but the entire nature trail should be walked. Myriad migrating warblers foraging in the trees can be found here. The spring of 1993 was particularly fruitful and the Garden was on the Chicago Audubon Society Rare Bird Hotline as the place to be for warbler watchers.

Mid-morning, rather than dawn, is best, but on weekdays after 10



Figure 1.

## Map of the Chicago Botan

1. Aquatic Garden.
2. Bulb Garden.
3. Carillon.
4. Children's Vegetable Garden.
5. Dwarf Conifer Garden.
6. Education Center and Greenhouses.

a.m., elementary school classes may hinder birding. For best light, the trails should be walked from south to north. Include the patch of trees along the lake southwest of the service road and check this lake for ducks. For the last three years, from late February to late April, Great Horned Owls have raised young in an artificial nest along the Illinois trail; look but PLEASE DO NOT DISTURB! The tameness of the Turnbull deer is a treat, especially for quiet children.

Although the evergreens and other vegetation along the Skokie River on the west side of the Garden hold relatively few birds, sparrows can abound here, and Prairie Warblers and Harris's Sparrow have been seen.



## Garden of Eatin', Glencoe, Illinois.

- |                                |                              |                                  |
|--------------------------------|------------------------------|----------------------------------|
| 7. Enabling Garden.            | 13. Landscape Gardens.       | 18. Sensory Garden.              |
| 8. English Walled Garden.      | 14. Naturalistic Gardens.    | 19. Turnbull Woods Nature Trail. |
| 9. Fruit and Vegetable Garden. | 15. Plant Evaluation Garden. | 20. Waterfall Garden.            |
| 10. Herbaceous Trial Gardens.  | 16. Prairie.                 | 21. Marsh Island.                |
| 11. Heritage Garden.           | 17. Rose Garden.             | 22. Maintenance Barn             |

The river itself rarely attracts birds but is scheduled for habitat enhancement.

All the lakes except the two southwesternmost are unpolluted, full of fish, and good for birds. Waterfowl are plentiful from early March to late April, with peak species diversity in the first half of April. Canvasback, Redhead, and Ruddy Duck are regular. Eared Grebe (20 March-16 April) is irregular. Some non-breeding ducks may remain into June. Carefully scan the shorelines, as pond ducks can be remarkably inconspicuous against the brown banks. Gulls, which often loaf on the south side of the Carillon island, should be scrutinized for rarities.

### Fall

Most of the comments for spring hold true for fall, when 196 species have been recorded. As elsewhere in the Chicago area, migration begins in mid-July and is in full swing by the last week of August.

The best vantage for watching fall raptor migration is the north side of the highest hill in the Dwarf Conifer Garden (5), which affords a fairly unobstructed northerly view. Days with strong west or northwest winds after a period of southerly air flow are best. A scope is mandatory. Some 2,185 Sandhill Cranes were counted here on 13 November 1992.

The Canada Goose flock, which is largest in late fall, should be searched for other goose species. Late fall is the most likely time to encounter "winter finches" (see below). In dry years, beginning in late July, the lake crossed by Dundee Road sometimes has a small mudflat suitable for shorebirds.

### Winter

This season has produced 69 species, but birding in most of the Garden, especially in January and February, can sometimes be bleak. The lakes usually freeze over by Christmas, although a small area at the south end of the Sensory Garden (18)

point remains open all winter and may attract unusual waterfowl. During invasion years, from November into December and sometimes later, Red Crossbills have been found in the scattered fruiting pines, White-winged Crossbills in the firs, and Pine Siskins and Common Redpolls in the birches next to the Education Center (6) and in the Sensory Garden and sometimes at the feeders outside the present cafe and in the Naturalistic Garden (14). These feeders, along with two in the Plant Evaluation Garden (15), provide the best winter birding in the Garden.

Fruiting trees throughout the grounds, but especially in the northwest corner along the service road, sometimes attract flocks of Ameri-

can Robins and Cedar Waxwings. Bohemian Waxwing was recorded once.

## Summer

Because "summer," as defined for the Garden, includes half of August, some of the 96 recorded species are really fall migrants. Breeding in the Garden has been confirmed for 49 species and is considered probable or possible for 25 others. The most interesting of these are Black-crowned Night Heron (along the Skokie River in the evening and the southeasternmost lake during day), Orchard Oriole (around the maintenance barn [22] and in the

Japanese Garden [12]), Wood Duck, and Willow Flycatcher. Six species of swallows, including Cliff, occur regularly; all but Bank breed.

The Garden is deploying floating islands to attract breeding Pied-billed Grebes and night-herons and is planting emergent aquatic vegetation along some lake shores to prevent erosion. Late spring and early summer are the best times to enjoy the flowering plants.



Laurence C. Binford  
330 Grove Street,  
Glencoe, IL 60022

---

## Visitor Information

The Chicago Botanic Garden is in Glencoe, northeastern Cook County. Owned by the Forest Preserve District of Cook County and managed by the Chicago Historical Society, it was established in 1965 and opened to the public in 1972.

The entrance is along Lake-Cook Road 0.6 mile east of U.S. 41 (four-way interchange) and 0.5 mile west of Green Bay Road. If driving from the south, be careful to stay on U.S. 41 when I-94 branches off to the right just past Dundee Road. From the north, take U.S. 41. The Chicago and North Western Railroad, North Line, stops at the Braeside station, 0.7 mile east of the Garden.

The Garden is officially open from 8 a.m. to sunset, but the main gate is opened about sunrise, so early birders can gain access to the parking lots. A \$4 parking fee is charged for non-members. The service road encircling the grounds is closed to the

public but may be walked. A guided tram tour, which costs \$3.50 or less and is not a bird tour, follows this road.

An information desk, gift shop, cafe, and restrooms are located in a new building which opened in fall 1993. Picnic tables are located between parking lots 1 and 2. Motels, gas, and gourmet, deli, and fast-food eateries are available just west of the Garden along Old Skokie Road between Dundee and Clavey roads.

A multicolored map, similar to but larger than the one presented here, is available at the information desk. The round-trip walk from the parking lots along the west service road to the prairies and back along the east side through Turnbull Woods is about 2.5 miles.

Please stay on walks, roads, and lawns; the plants in Turnbull Woods, the prairies, and all the gardens are

fragile. Poison ivy grows in Turnbull. Feeding of wildlife is prohibited. Avoid the Japanese Garden on sunny weekends when people are numerous but birds are not.

The Garden checklist of birds (1993), which gives seasonal abundances, may be obtained at the information desk. The Garden maintains a permanent file for bird data. New species continue to be added.

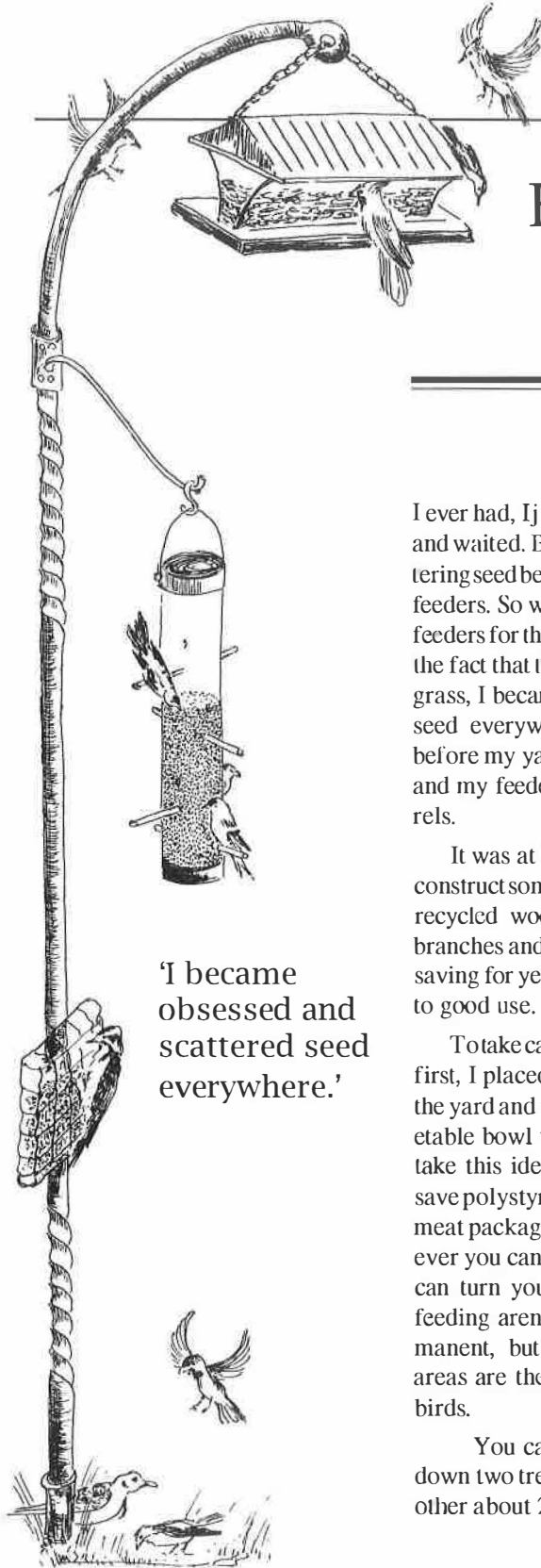
Before you leave, please report directly to ecologist James Steffen (Monday through Thursday only: 708-835-8266) or to the information desk any species unrecorded on the checklist and those listed as casual or accidental, as well as nests or fledglings of species not listed and "confirmed" breeding.

I thank Richard Biss, Michael J. Hogg, James F. Steffen, and Alan Stokie for helpful comments on Garden birding.



# Homemade Feeders

by Sue Friscia



'I became  
obsessed and  
scattered seed  
everywhere.'

The first bird feeder I ever had, I just hung on the clothesline and waited. Birds came in bunches scattering seed below which attracted ground feeders. So without any effort I had two feeders for the price of one. Oblivious to the fact that the feed was destroying the grass, I became obsessed and scattered seed everywhere. It didn't take long before my yard was covered with birds and my feeder was destroyed by squirrels.

It was at that point that I decided to construct some inexpensive feeders with recycled wood scraps, driftwood, tree branches and stumps - things I had been saving for years and could finally be put to good use.

To take care of my "squirrely" friends first, I placed three tree stumps around the yard and nailed a plastic frozen vegetable bowl to the tops. If you want to take this idea one step beyond sanity, save polystyrene foam bottoms used for meat packaging and tack them to whatever you can find around the yard. You can turn your property into one huge feeding arena. Granted this is not permanent, but it will show you which areas are the most popular among the birds.

You can also try, as I did, laying down two tree branches parallel to each other about 2 feet apart and then alter-

nating with two more branches until it gets 2 feet high. I placed a half of a hollowed out stump on top to form the feeding area. The finishing touch was a forked branch strategically set to provide perching space. It became apparent when the first squirrel jumped on the feeder and everything went flying that I would have to make this assemblage more permanent. I tried nails, but they cracked some of the thinner branches. So I drilled holes and screwed my makeshift feeder together.

I designed another homemade feeder for my front yard. I had no trees on which to hang the feeder, so I painted a chair leg I found at a garage sale and used an angle bracket to screw it right above the living room picture window. It became the favorite hangout for goldfinches and House Finches.

If you have any interesting ideas for homemade feeders to share with readers, send me a photo or drawing with simple instructions.



Sue Friscia

3417 West 123rd Street  
Alsip, IL 60658

*Drawing by Denis Kania.*



# Spring Trio

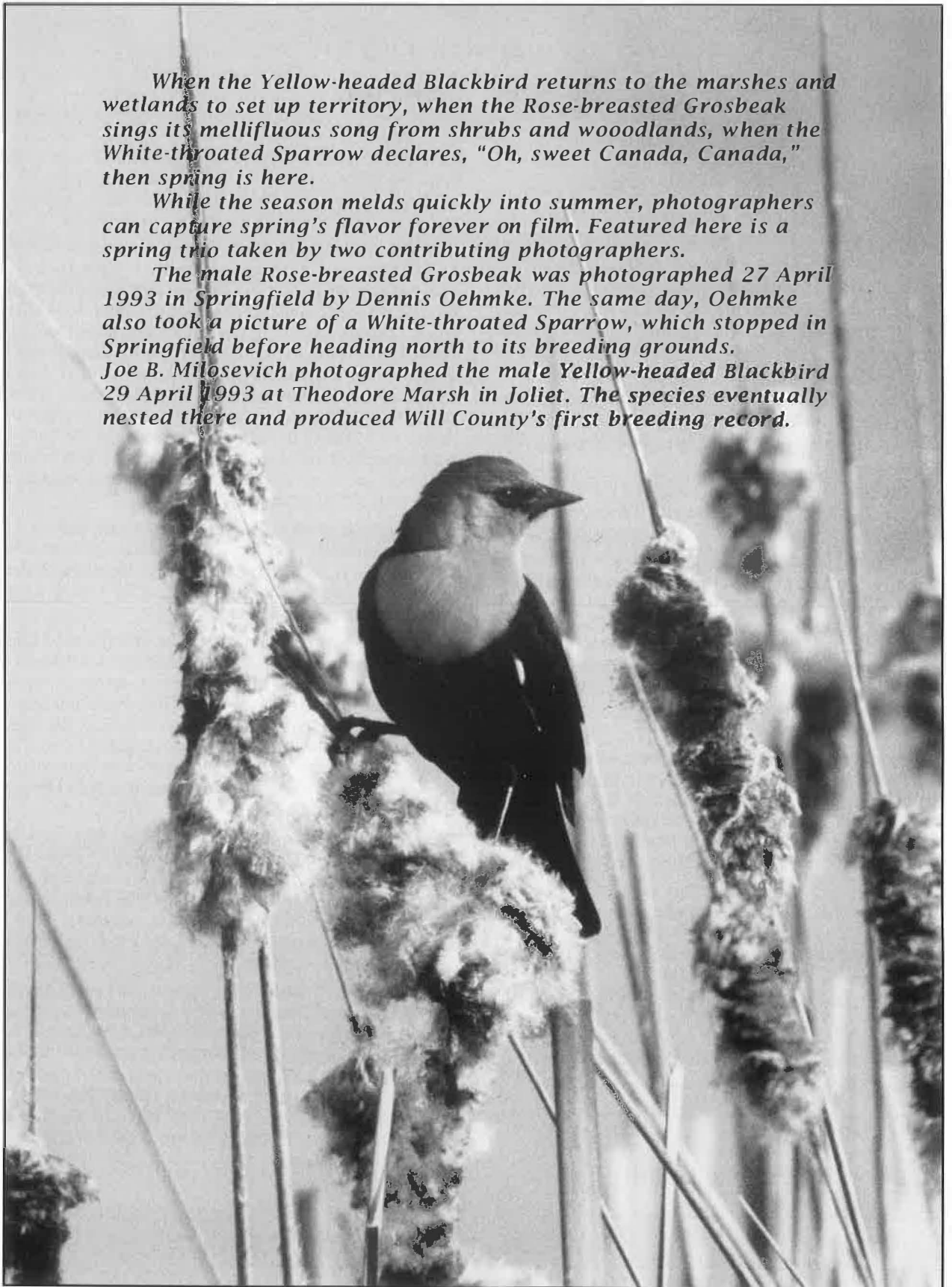
LEFT / Rose Breasted Grosbeak  
RIGHT / Yellow Headed Blackbird  
BELOW / White Throated Sparrow



*When the Yellow-headed Blackbird returns to the marshes and wetlands to set up territory, when the Rose-breasted Grosbeak sings its mellifluous song from shrubs and woodlands, when the White-throated Sparrow declares, "Oh, sweet Canada, Canada," then spring is here.*

*While the season melds quickly into summer, photographers can capture spring's flavor forever on film. Featured here is a spring trio taken by two contributing photographers.*

*The male Rose-breasted Grosbeak was photographed 27 April 1993 in Springfield by Dennis Oehmke. The same day, Oehmke also took a picture of a White-throated Sparrow, which stopped in Springfield before heading north to its breeding grounds. Joe B. Milosevich photographed the male Yellow-headed Blackbird 29 April 1993 at Theodore Marsh in Joliet. The species eventually nested there and produced Will County's first breeding record.*



---

## SEASONAL HIGHLIGHTS

---

### Glossy Ibis at Crabtree Nature Center

---

The morning of 6 May 1993 while I was working at the Crabtree Nature Center, Barrington, Cook County, David Habisohn walked in and told me he had seen a Glossy Ibis (*Plegadis falcinellus*) in the beaver pond on the property. I jumped into my car to confirm the sighting.

I drove to the 25+acre pond in the midst of the 1500-acre Cook County Forest Preserve which contains hardwood reforestations, grassland plantings, and wetlands.

On this bright sunny day I could clearly see the distinct face pattern that separates Glossy Ibis from White-faced Ibis.

This bird, in adult breeding plumage, was about the size of a Mallard Duck but much larger than a Blue-winged Teal, both nearby. Its body was all dark and it had long, grayish legs and a long, grayish, decurved bill. The crown feathers, back, scapulars, and wing coverts were black with a blue-green iridescence. The breast, belly, and short tail were dark. The head, neck, and shoulders showed a rich rusty brown with a slight iridescence.

I could not detect any white at the base of the bird's bill; however, other observers later in the day using a Questar scope were able to discern a very narrow whitish band (with some blue tint) at the base of the bill as opposed to the heavy white mark which would be seen circling the red eye on a White-faced Ibis.

For the next 48 hours, many visitors came to see the Glossy Ibis including Richard Biss who operates the Chicago Audubon Society Rare Bird Hotline, Ken Wilz, Amy Bergman, Robert Montgomery, Ted Dillon, Laurence Binford, and Dave Johnson.

The bird was last seen at 1:15 p.m. 7 May 1993.

Charles A. Westcott, Crabtree Nature Center,  
Route 3, Stover Road, Barrington, IL 60010

---

### Glossy Ibis in Pulaski County

---

Knowing the birding potential of the Ducks Unlimited tract of the newly formed Cypress Creek

N.W.R. for wading birds, Judy DeNeal, Bob Lindsay, John Andrews, and I spent a good part of 8 May 1993 slogging through the shallow impoundments in what was once farmland adjacent to the Cache River.

After having filled my rubber boots with water, which gave new meaning to the term aqua socks, I decided to really take the plunge and wade through thigh-deep water to see what was on the other side of the levee. There I saw Great Blue and Little Blue Herons, Great Egrets, and two, relatively small, chestnut-colored waders. I immediately recognized them as ibises by their general shape and long decurved bills. After nearly swimming back to the car to inform DeNeal and Andrews (Lindsay had already departed) of the ibises, we approached the birds by a levee to the south where we could get better lighting on the birds and approach them within 100 yards.

Small birds were foraging in a shallow, moist soil unit with standing persistent hydric plants (*Polygonum sp.*, *Juncus sp.*, and *Rumex crispus*) at the edge of the water. They were bent over foraging by raking their bills through water and mud.

The birds were about the size of adjacent Little Blue Herons, with chestnut bodies and iridescent blackish green wings, and long, decurved, brownish-gray bills, which were lighter distally. Both birds had light-blue facial skin that was interrupted behind the eye. The facial skin was most evident frontally, where it formed a shallow "V". Leg color was yellowish-brown. These field marks were consistent with Glossy Ibis (*Plegadis falcinellus*).

Clued by the flight of other herons, they flew in wide circles, with alternating shallow wing beats and soaring. They eventually landed in an adjacent impoundment with dense vegetation. We attempted to relocate the ibises in the vegetation, but never found them. Following days' searches by other observers were also unsuccessful.

Less than a dozen spring records and about seven fall records exist for Glossy Ibis in the state according to Bohlen (1989, *The Birds of Illinois*). Care should be taken when identifying the dark ibises, especially in the fall when the color of the bare parts may not be evident. For a summary of field marks separating the White-faced Ibis from the Glossy Ibis, refer to an article written by H. Douglas Pratt (*Birding*, Vol. 8, No. 1, Jan-Feb. 1976).

Todd Fink, Route 1, Box 220, Ozark, IL 62972



Yellow Rail. Drawing by Brian K. Willis.

---

## Yellow Rail at Montrose Harbor, Chicago

---

On 22 May 1993 I rode my bicycle to Montrose Beach along Chicago's lakefront, Cook County, to bird the area affectionately referred to as the "magic hedge" because it is a migrant bird trap. Bird watchers were lining the hedge when I arrived.

James Landing thought he had seen a Black Rail (*Laterallus jamaicensis*) at his feet in the grass. Kanea Hirabayashi also saw a rail disappear into the dandelions and grass. Since rails notoriously slink out of sight and this rail seemed to be no exception, I left to search for other birds.

I returned about 40 minutes later to learn that the rail was positively identified by Landing as a Yellow Rail (*Coturnicops noveboracensis*). Birders were now encircling the rediscovered rail and taking photographs. I stood behind one of the photographers and saw the feathered object of everyone's attention, a gorgeous Yellow Rail in the dandelions.

The bird was smaller than an American Robin. It had a small yellow bill and a very yellow brown plumage with black stripes on its back. The white wing patches on the secondaries were not conspicuous except when the bird flew. The rail would disappear into

the short grasses by compressing itself like a mouse and then reappear in the dandelions. Some 20 birders saw the rail.

An overzealous birder flushed the rail. It flew into the "magic hedge" and was never seen again.

The 22 May date coincides with the latest Illinois spring sighting, according to H. David Bohlen, author of *Birds of Illinois*. Molodtsov's *Chicago Area Birds* said the species' normal spring departure is the third week in April.

Irene Benjamin, 8652 Monticello Ave., Skokie, IL 60076

---

## Late-departing Immature Black-legged Kittiwake

---

In spring, I regularly bird Waukegan's North Beach on Lake Michigan in Lake County mornings and late afternoons. When I stopped after work 3 June 1993, I spotted a Great Black-backed Gull among a group of about 300 gulls resting on the beach south of the pier.

I left to get my camera to photograph the gull. Upon returning, I scanned the group with my spotting scope, but was unable to find the Great Black-backed

Gull. Instead I found a small gull with a yellow bill and black legs. I immediately recognized it as an immature Black-legged Kittiwake (*Rissa tridactyla*) going into second year plumage. The bird had a black spot behind the eye and still had the black median (secondary coverts) of an immature, but did not have the black half collar.

This was my first spring sighting of a Black-legged Kittiwake. I had previously seen them in October and November and as late as January. I observed and photographed this Black-legged Kittiwake both at rest and in flight, for about 45 minutes, sometimes as close as 30 feet.

The significance of the sighting was the extremely late date. The same bird was seen at the same location by Andy Sigler and Robert Hughes 8 May 1993 during the Lake County Spring Bird Count. Hughes also observed what was probably the same individual 28 May 1993 at Chicago's Montrose Beach.

Previous recorded late spring sightings were 8 April, (Bohlen 1989, *The Birds of Illinois*), and 5 May (Mlodinow 1984, *Chicago Area Birds*). The only other midwestern June or July records mentioned in the literature were an 11 June 1982 record from northern Minnesota listed by Janssen (1987, *Birds in Minnesota*) and a 30 July 1977 record from near South Manitou Island, Michigan (Leelanau Co.) listed by Payne (1983, *A Distributional Checklist of the Birds of Michigan*).

*Jim Neal, 2303 Elisha Ave, Zion, IL 60099*

---

## Illinois' Second Arctic Tern

---

I had decided to visit Brandon Road Lock and Dam along the Des Plaines River between Joliet and Rockdale, Will County 27 May 1993 for two reasons. First, I had not checked this hotspot since the Spring Bird Count of 8 May 1993. Secondly, and more importantly, I had promised my 5-year-old daughter, Julie, that we would go somewhere which could be birded very quickly. Fortunately for me, Brandon Locks lived up to its hotspot potential, but unfortunately for Julie we did not watch birds very quickly that day.

When we arrived at 11:45 a.m. below the dam, I immediately noticed a medium-sized tern flying over the shallow river near the Brandon Road bridge. When I viewed this breeding-plumaged adult through binoculars, I was instantly struck by the tern's striking no-neck appearance and the prominent white cheek line, which was outlined by a black cap and gray throat. Without a doubt, I had chanced upon Illinois' second Arctic Tern (*Sterna paradisae*)!

The tern's white cheeks and gray underparts (throat, breast, and belly) were most obvious in the overcast

light conditions present during the initial hours of observation. When I departed at 2:10 p.m., the bright sunlight had somewhat obscured these two significant field marks. However, when I returned at 5:30 p.m., these features were once again evident in the late afternoon sunlight. Overall, deciphering the exact degree of gray of both the underparts and mantle was at times difficult due to varying light conditions. The gray of the underparts did generally appear slightly paler than the gray of the mantle.

I did notice other field marks which were more independent of light conditions. The tern had a small, all red bill as well as short, red legs. Its rump and undertail coverts were white. The upperside of the bird's primaries exhibited a diffused gray trailing edge which was only slightly darker than the mantle. The white underside of the wings displayed much translucency in the flight feathers and a narrow, sharply defined blackish trailing edge on the primaries. When perched, the tern's tail extended well beyond its wing tips.

Fortunately, I was able to capture most of these diagnostic field marks on film. The prevailing high winds did, however, make hand-held 400 mm photography of a darting tern quite a challenge. Not surprisingly, the best photos were those taken in overcast light.

The tern's activities were limited primarily to foraging over the river with Ring-billed Gulls. It never dove into the water, but instead picked at items on or near the river's surface. Once it emitted a raspy call while foraging, apparently in response to a nearby competitor Ring-billed Gull. In a few instances, the tern perched on rocks in the exposed riverbed.

Despite being observed after I left at 6:40 p.m., the Arctic Tern followed the same pattern of other rarities that I have found in the area (e.g. Little Gull, Mew Gull) and was not present the next day. I know for certain that at least five other birders observed the tern the same day I did.

The status of the Arctic Tern in the state was categorized as hypothetical by Bohlen (1989, *The Birds of Illinois*) based on his one-observer sighting at Lake Springfield's Cinder Flats on 3 October 1986 of a first-year immature bird. However, Bohlen did, again, find an Arctic Tern (an adult this time) at this same location 28 June 1992 which remained until 1 July and was confirmed by photos as the state's first record (Bohlen 1993, *Meadowlark* 2:12).

*Joe B. Milosevich, 2337 Ardaugh Ave., Crest Hill, IL 60435*

---

## Chestnut-collared Longspur at Lake Calumet

---

On 17 April 1993, David Mandel, Christine Philip, and Geoff Williamson found a longspur in the

Meadowlark



tomato field at the north end of Lake Calumet, Cook County, that they thought may be a female Chestnut-collared Longspur (*Calcarius ornatus*). I went there that afternoon with Philip but we could not find the bird. The next morning, we returned again with Mandel and Williamson. This time we were able to find the longspur, which had been joined by a sizable flock (40 or more birds) of Lapland Longspurs (*C. lapponicus*).

The bird was secretive and difficult to see, but it also tended not to fly away as readily as did the other longspurs and we were able to get several excellent views through telescopes.

The female Chestnut-collared Longspur was slightly, though noticeably smaller than the Lapland Longspurs. This was most obvious when it was flying with the flock of laplands, but when the two species were sitting side by side, the difference was also apparent.

The bird was probably in basic plumage and appeared to be in fresh molt, or at least not substantially worn. Its overall upper parts were tannish to gray-brown and the underparts nearly white. The crown was buffy with sharp, short black streaks. The streaking was most prominent near the middle of the crown and was very fine at the forehead and nape. The more or less uniformly streaked crown cleanly set off the face which was distinctly pale yellow. There was a hint of a blackish-brown streak running back from the eye and a grayish brown malar streak, but no other dark face markings. Occasionally, the eye appeared to be encircled by a white orbital ring, but this was thin and often not visible. The bill was fairly small, similar in size to a Savannah Sparrow's, although a bit shorter, or to a Lapland Longspur's bill. The bill was partially pale pink or straw colored; however, most of the culmen, the tip, and a bit of the underside of the lower jaw were blackish.

The back was similar in color and pattern to the crown. It was predominantly grayish buff, with dark brown feather centers that formed short, arrowhead streaks across the back. The streaks were largest near the scapulars and quite fine on the lower back. The back feathers seemed to be edged with grayish white. This occasionally gave a scaly appearance, but mostly just made the bird look pale and grayish. The rump and uppertail coverts were grayish white and had little of the brown tone.

The wings were mostly the same buffy color but had several distinctive marks. The greater coverts were plain gray with a thin shaft streak that widened to a lanceolate streak near the tip. The tips of the greater coverts were white and broadly pointed. This produced a thin but distinct zigzag wing bar. The secondaries and tertials were broadly edged with pale buffy gray. I could not make out any shoulder or wrist marks.

The underparts were mostly uniform grayish white with a few thin gray streaks on the flanks and sides of the upper chest. There was no black on the belly or throat, but perhaps a hint of gray mottling on the upper chest.

The folded tail showed a bit of white at the base, but

was mostly black. When in flight, the white sides of the tail were prominent at the base, but thin at the tip. In the few views I had of the bird flying, I could not clearly see that the black center of the tail was "triangular," but the white outer tail feathers did not form the same white edge to the tail as seen on the Lapland Longspurs. The tail was about the same length, relative to the body, as was the Lapland's, so the overall shape of the Chestnut-collared Longspur in flight was about the same as that of the Lapland.

The most distinctive feature of this bird, and the one I feel most confident about in the identification, was its call. This bird gave the typical "kittle" call that is unique to Chestnut-collared Longspurs. I heard this call first when the bird was alone and had jumped up to fly a short distance away. This time, and the second time it flew and called, it gave single "kittle" calls, not doubling the call as they often do. The call was not dry and rattling as a Lapland's call is but had a much gentler quality like a spoken word. I have had a great deal of experience with this call in California and Arizona and believe it is unmistakable.

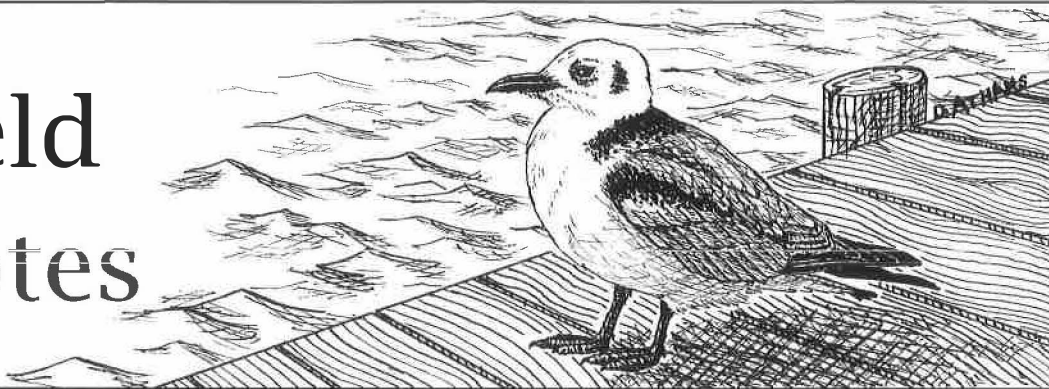
Mlodinow listed the species as being "hypothetical" in the Chicago area with three "unverified" spring records spanning the dates of 18 - 25 April (1984, Chicago Area Birds). Bohlen said there are three recent "properly documented" sightings and listed the species as a very rare migrant in the state (1989, The Birds of Illinois). In addition, a recent winter sighting was documented for the state 10 February 1991 in La Salle County (IB&B 7:75). The species has been recorded in every surrounding state except Kentucky and Indiana according to DeSante and Pyle (1986, Distributional Checklist of North American Birds, Vol 1.). This sighting might be the first verified record by a description and multiple observers for the Chicago area.

John O'Brien, 5141 S. Ellis Ave. #2, Chicago, IL 60615



Black Legged Kittiwake at Waukegan Beach, Lake Co.  
\* 3 June 1993 -- Jim Neal

# Field Notes



*Black-legged Kittiwake. Drawing by David Athans.*

## 1993 Spring Migration

by Eric Walters

Because the last three years have been earlier than normal springs, observers were lulled into thinking the 1993 spring migration was late. However, when compared to decades of data, this one was right on time. The most unusual thing about spring 1993 was the prevailing southeasterly winds in late March, 15-20 April, and 6-15 May. Most of the unusual records for this spring occurred during those times. Noteworthy occurrences included the following species: Cinnamon Teal, Barrow's Goldeneye, Glossy Ibis, White-faced Ibis, Black-necked Stilt, Mew Gull, Black-legged Kittiwake, **Arctic Tern**, Western Kingbird, **Townsend's Warbler**, **Painted Bunting** (a first confirmed state record), and **Chestnut-collared Longspur**. In addition, Robert Chapel submitted an interesting analysis of the Sandhill Crane migration this spring. He noted that the cranes abandoned their normal migration corridor and instead migrated over east-central Illinois.

Don't let the newspaper accounts or the Chicago birding hotline fool you; spring 1993 was not exceptional in northeastern Illinois or elsewhere in the state. For downstate observers, this was a below average to average migration. What was spectacular (truly the best ever there) was the migration at Skokie Lagoons and the Chicago Botanic Garden. Also, inland, the Des Plaines River valley in N. Cook and parts of Lake County were quite excellent. These areas dominated the hotlines and gave the erroneous impression that Chicagoland was exceptional for migration. However, the lakefront areas like Montrose Harbor, the Bird Sanctuary, Olive and Grant Parks, Evanston, Wilmette, and even Waukegan were rather dull compared to recent years. The only

lakefront area that was exceptionally good was Jackson Park's Wooded Island. It is possible that the southeasterly winds took most of the birds beyond the lakefront and into the nearby inland areas previously mentioned. For those observers fortunate to bird in those "prime" locations — it was a spring to remember!

Illinois' average precipitation for the months of March, April, and May were 1.14 below, 1.04 above and .74 below normal respectively. The state's average temperature was 1.9 below, 2.8 below and 1.0 above normal respectively.

A special thanks is extended to all contributors to this report. Those records that were most significant have been included in this report and the birders responsible for the sightings are listed below. The first initials of their names were used except as indicated below by three initials: Alan Anderson, Cindy Alberico, Doug Anderson, Arlene Brei, Alan Branhagan (ABr), David Bohlen, David Brenner (DBr), Eileen Bunker (EBu), Laurence Binford, Michael Baum, Richard Biss, Renee Baade (RBA), Tadas Birutis (TBi), Elizabeth Chato, Hal Cohen, John Csoka (JCs), Karin Cassel, Robert Chapel, Richard Carhart (RCa), Roger Coons (RCo), Aura Duke, Bob Danley, Danny Diaz, Dennis DeCoursey (DDe), Donald Dann (DDn), Glen Dawson, Judy DeNeal, Jeff Donaldson (JDo), Sylvia Dawson (SDa), Bob Erickson, Betsy Fikejs, Susan Friscia, Todd Fink, Joel Greenberg, Jerry Garden (JGa), Rob Gough (RGo), Barrie Hunt, Dave Habisohn (DHa), Jeff Hoover (JHo), Kanae Hirabayashi, Marianne Hahn (MHa), Robert Hughes, Ralph Herbst (RHe), Scott Hickman, David Johnson, Larry Jones (LJ), John Koch, Peter Kasper,

Vernon Kleen, Eric Lattuner, James Landing, Steven Lee, Ann Minkler, Barb Meding, Bill Minkler (BMi), Catherine Monday, David Mandel, Joe Milosevich, Jeff McCoy (JMy), Keith McMullen, Margot Merrick (MMr), Patti Malmborg, Walter Marcisz, Dennis Nyborg, Jim Neal, John O'Brien, Christine Philip, Jack Pomatto, Richard Palmer, Richard Peiser (RPe), Sebastian Patti, Harriet Rylaarsdam, Kevin Richmond, Alan Stokie, Alice Schmidt (ASc), Andrew Sigler (ASi), Darrell Shambaugh, Jim Smith, Jeffrey Sanders (JSa), James Steffen (JSi), Muriel Smith, Mark Seiffert (MSe), Sherman Suter (SSu), Valdemar Schwartz, Wes Serafin, Craig Thayer, Dave Tomasko, Allan Welby, Charles Wescott, Dan Williams, Eric Walters, Geoff Williamson, Helen Wuestenfeld, Kenneth Wilz, Larry Willis, Peg Walsh, Rick Wright. In addition, thanks to Richard Biss for providing a summary compilation from the Chicago Audubon Society Bird Hotline.



*American White Pelican, 21 March 1993, Little Calumet River, Cook County. Photo by Walter Marcisz.*

### 1993 Spring Field Notes

#### Common Loon

EA: 16 Mar., Spfld (DB); 27 Mar., Riverdale (GW, WM). MC: **148** (from 23 lakes), COL, 3 Apr. (DJ) - 107 there on 2 Apr.; 51 on Pistakee L. (Lake Co.), 30 Mar. (DJ). LD: 1 June, Decatur (MD); 30 May, LCal (DM), 26 June, White Heath (Champaign Co.) (RC), 27 June (possibly injured), Spfld (DB).

#### Pied-billed Grebe

EA: 31 Jan., Spfld (DB); 7 Mar., M.Arb (RCo); 16 Mar., CBG (LB). MC: 43, Victoria area, 17 Apr. (MB); 19, LCal, 18 Apr. (WM). LD: 30 May, IP (HR); 27 May, Sang.L. (DB).

#### Horned Grebe

EA: 30 Jan., Clin.L (RC); 7 Feb., Spfld (DB); 8 Mar., Chi (EW). MC: 72, e. Winnebago Co. (2 sites), 11 Apr. (DW); 29, Spfld, 24 Mar. (DB). LD: 2 May, CBG (LB); 23 Apr. (2), Spfld (VK).

#### Eared Grebe

EA: 15 Apr. (7), Spfld (DB). MC: 8 (all in flock), Spfld, 16 Apr. (DB). LD: 26 Apr., Decatur (MD).

#### American White Pelican

MC: 4, Chi (Montrose), 24 May (RH) -

#### KEY TO THE SEASONAL REPORT:

Species that are capitalized, underlined and boldfaced are occurrences of note (generally recorded less than 10 times for the state, or less than 10 times for the season). The locations, maximum counts, arrival and departure dates that are extremely significant are underlined and boldfaced.

A number in parentheses indicates the number of birds observed at a particular location or date. No number signifies single birds.

ad. = adult	m.ob. = many observers	F.P. = Forest Preserve	EA: = Earliest Arrival
pr. = pair	Co = County	N.P. = Nature Preserve	MC: = Maximum Count
* = documented record	L = Lake	S.P. = State Park	LD: = Latest Departure
** = specimen record	C.A. = Conservation Area	et al. = others present	

#### Other Abbreviations Used:

Carl.L = Carlyle Lake (Clinton Co.)	KCP = Kennekuk Cove Park (Vermilion Co.)
CBG = Chicago Botanic Garden (Cook Co.)	LCal = Lake Calumet (Cook Co.)
Chi = Chicago's lakefront parks excluding Jackson Park (Cook Co.)	LChau = Lake Chatauqua N.W.R. (Mason Co.)
Clin.L = Clinton Lake (De Witt Co.)	LRen = Lake Renwick (Will Co.)
CNC = Crabtree N.C. (Cook Co.)	LShel = Lake Shelbyville (Moultrie & Shelby Cos.)
COLSP = Chain O' Lakes S.P. (Lake Co.)	M.Arb = Morton Arboretum (Du Page Co.)
CONW = Crab Orchard N.W.R. (Williamson Co.)	MFVA = Middle Fork F.W.A. (Vermilion Co.)
DPCA = Des Plaines C.A. (Will Co.)	MS = McGinnis Slough (Cook Co.)
Fermi = Fermilab at Batavia (Du Page Co.)	RLCA = Rice Lake C.A. (Fulton Co.)
GLP = Goose Lake Prairie S.P. (Grundy Co.)	Sang.L = Sangchris Lake S.P. (Sangamon & Christian Cos.)
GLNTC = Great Lakes Naval Training Center (Lake Co.)	Spfld = Springfield (Sangamon Co.)
IBSP = Illinois Beach S.P. (Lake Co.)	SRSF = Sand Ridge S.F. (Mason Co.)
JP = Chicago's Jackson Park (Cook Co.)	UCCA = Union County C.A. (Union Co.)
	Wauk = Waukegan (Lake Co.)

flying south. LD: 27 May, Spfld (DB). Others: Overwintering bird present in s. Cook Co all spring: 13-17 Mar., Palos Heights (VS); 20 Mar.-10 Apr., w. of LCal (WM, WS, m.ob.), 24-26 Apr. (CT, m.ob.), Worth & 9 May-17 June+, LCal (JL, WM, m.ob.) — a range of ten miles; 30 Apr., CONWR (BD); many present along Mississippi River (fide DB).

**Double-crested Cormorant**

EA: 17 Mar. (6), Braidwood (JM); 28 Mar., Chi (KH). MC: ~~2500~~, RendL, 4 Apr. (TF); ~~500+~~, Mason Co, 12 Apr. (KR); ~~300~~, LRen, 26 Apr. (JM); 250, Spfld, 18 Apr. (DB). LD: 4 June, Sang. L (DB), 13 June, Chi (KH). Many flights over 50 throughout the state; numbers increasing all over.

**American Bittern**

EA: 9 Apr, Chi (SF, KH); 10 Apr., Clin.L (RP, MD); 17 Apr., Lockport (CA). LD: 18 May, CNC (fide RB); 14 May, Chi (KH). Others: 8 others in Cook Co, 22-30 Apr. (m.ob.); 26 Apr. (2), Pomona (KM); 2 May, Union Co (KM, MSc). No other reports outside n.e. Illinois.

**Least Bittern**

EA: 8 May, Joliet (JM). LD: 23 May, JP (RH, m.ob.); 19 May, Spfld (DB). Others: 8 May, CarlL (KM et al.); 26 May, Lockport (JM), ?? May, CBG (MMr).

**Great Blue Heron**

EA: 6 Mar. (4), Mason Co (RP); 30 Mar., JP (KC). MC: ~~560~~, LRen, 7 Apr. (JM). LD: Others: 24, CBG, 18 Apr. (LB).

**Great Egret**

EA: 24 Mar., JP (KC); 24 Mar., LRen (JM). MC: ~~380~~, LRen, 26 Apr. (JM); 87, MS, 14 May (WS). LD: 18 May, Chi (KH).

**Snowy Egret**

EA: 19 Apr. (5), Union Co (KM); 30 Apr., Havana (KR); 6-9 May, near CNC (KW, JCS, m.ob.). MC: 6, Pulaski Co, 2 May (KM). LD: 28 May, Dickson Mounds (KR).

**Little Blue Heron**

EA: 15 Apr.- 2 May, Sang.L (DB, m.ob.); 1 May, w.c. Lake Co (fide RB); 8 May, DPCA (JM); 9 May, LCal (RC). LD: 7 June (ad.), Middlefork F.P. (Champaign Co.) (RC, EC).

**Cattle Egret**

EA: 1 Apr. (2), East St. Louis (TF); 16 Apr., SLCA (KR); 28 Apr., LCal (WM). MC: ~~300~~, Union Co, 4 May (TF); 24, w. Will Co, 8 May (JM); 22, Havana, 30 Apr.-4 May (KR). LD: 28 May, Havana (KR); 24 May (2), Decatur (MD); 23 May, Chi (RH). Others: 8 May, Shabbona L (De Kalb Co) (DS); 14 May, Vernon Hills (DJ); 15 May, CBG (LB); 15 May, Wauk (DM).

**Green-backed Heron**

EA: 9 Apr., Johnson Co (TF); 18 Apr. (2), Chi (KH, HR); 18 Apr. (2), LCal (WM). MC: 14, LCal, 8 May (WM, JL). Others: 2 Mar., Chi (SP).

**Black-crowned Night-Heron**

EA: 21 Mar. (3), LRen (JM); 26 Mar., Rockford (DW). MC: ~~1511~~, LCal, 30 Apr. (WM, AA et al.) - counted as they left their

daytime roost.

**Yellow-crowned Night-Heron**

EA: 23 Apr. (2), Powderhorn L F.P. (Cook Co) (WM). Others: 9 May (2nd yr.), LCal (RC).

**GLOSSY IBIS**

6-7 May (ad.), near CNC (DHa, \*CW, \*m.ob.-ph.); 8 May (2), Pulaski Co (Ducks Unlimited Tract) (\*TF, \*JD). "Dark Ibis": 8 May, Greene Valley F.P. (Du Page Co) (\*AW); 8 May, LCal (Tbi, \*WM et al.). The three Chicago area records are presumed to be of the same bird. Glossy last seen flying southeast from CNC in direction of G.V.F.P. where it was seen in the morning of the 8th flying east in the direction of LCal where it was located twice during that afternoon.

**WHITE-FACED IBIS**

18 Apr., Havana (Negro L) (LW et al. - photos).

**Tundra Swan**

EA: 13 Mar., Boone Co (DW); 13 Mar., Fulton Co (fide MB). MC: 12, Goodenow (Will Co), 26 Mar. (AD, MHa). LD: 2-3 Apr. (7), Round Lake Beach (Lake Co) (DJ). Others: 6, Park Forest (Cook Co), 26 Mar. (AD, MHa); 28 Mar., Powderhorn L F.P. (Cook Co) (WM).

*American Bittern, 4 April 1993, Montrose Golf Course pond, Cook County.*

*Photo by Kanae Hirabayashi.*



*Least Bittern, May 1993, Chicago Botanic Garden, Cook County. Photo by Margot Merrick.*

**Mute Swan**

EA: 12 Mar., Champaign Co (RC); 16 Mar. (imm.), CBG (LB) - present to 9 Apr. MC: 10, Powderhorn L F.P. (Cook Co), 24-25 Apr. (WM). LD: 7 May, Chi (KH). Others: 31 Mar.-1 Apr., Fermi (PK).

**Greater White-fronted Goose**

EA: 1 Feb., Spfld (DB); 17 Feb. (7), Heidecke L (JM). MC: 26, Freeport, 18 Mar. (DW); 14, LRen, 17 Mar. (JM); 13, Clin.L, 20

Mar. (RC et al.). LD: 5 Apr. (2), Fermi (PK).

#### **Snow Goose**

EA: 17 Feb., Heidecke L. (JM). MC: 5000, Alexander/Pulaski Co, 4 Mar. (TF). LD: 2 June (white), Chi (KH) - flying n. with Canada flock; 4 May, Peoria Co (KR). Others: 9 Mar., MS (WS); 18 Mar. (16), Freeport (DW). Numerous comments statewide concerning the "nonexistent" migration of this species.

#### **Ross' Goose**

EA: 11 Mar. (2), Geneva (farm field) (DS) & later 12-14 Mar., Fermi (PK) but 2 there 15 Mar. (DM, m.ob.-ph.). LD: 23 Mar., s.w. of Spfld (DB); 13-20 Mar., RLCA (KR et al.). All were ad.'s.

#### **Canada Goose**

MC: 10-20,000, Mason Co, 6 Mar. (MD, RP). Others: 1000, n.e. Knox Co, 25 Mar. (MB); 240, JP, 2 Mar. (HR).

#### **Wood Duck**

EA: 7 Mar. (5), Chi (WM). MC: 36, La Salle Co, 24 Mar. (DS).

#### **Green-winged Teal**

EA: 7 Feb., Spfld (DB); 7 Mar., M.Arb (RCo). LD: 5 June (2 males), Wadsworth (JN). Others: 14-31 May (2 males), LCal (WM); 27-31 May (male), Decatur (MD, RP).

#### **American Black Duck**

MC: 150, Heidecke L. 12 Mar. (JM). LD:

#### **Mallard**

MC: 3,000, Braidedwood, 17 Mar. (JM).

*Glossy Ibis, 7 May 1993,  
Palatine Marsh, Cook County.*

*Photo by Joe B. Milosevich.*



#### **Northern Pintail**

EA: 1 Feb., Spfld (DB); 14 Feb. (2 males) Champaign Co (RC); 21 Feb. (9), LCal (WM). MC: 50, Clin.L, 20 Mar. (RC). LD: 14 May (male), Dickson Mounds (KR). Others: 15-31 May, LCal (WM).

#### **Blue-winged Teal**

EA: 11 Mar. (2), Alexander Co (TF); 18 Mar., Sang.L (DB); 19 Mar., DPCA (JM); 28 Mar. (3), Chi (KC, WM). MC: 200,

Monroe Co, 13 Mar. (KM); 108, Victoria area, 17 Apr. (MB). LD: 5 June, Havana (KR); 28 May (male), Jackson Co (RP); 8 May, JP (HR). Others: "partially albinistic", 31 Mar., Sang.L (DB) - only head was normal, rest of body albinistic; Cinnamon x Blue-wing, 14-16 Apr., s.w. of Spfld (DB) - with red on face and breast.

#### **CINNAMON TEAL**

8 May, Vermilion Co (♂m.ob.).

#### **Northern Shoveler**

EA: 12 Feb. (6), SLCA (KR); 15 Feb. (2 males), Crest Hill (Will Co) (JM). MC: 200, Clin.L, 22 Apr. (KM); 135, Spfld, 24 Mar. (DB). LD: 5 June (2 males), Havana (KR); 5 June (male), Somonack (La Salle Co) (DS); 29 May, near Hebron (McHenry) (RBa); 29 May (pr.), Champaign Co (RC, EC).

#### **Gadwall**

EA: 20 Feb., Decatur (MD et al.); 7 Mar., Wauk (CP). MC: 1,100, SLCA, 13 Mar. (MB); 95, DPCA, 19 Mar. (JM). LD: 4 June (male), Joliet (JM); 25 May (male), Decatur (RP, MD). **American Wigeon**

EA: 25 Jan., Spfld (DB); 14 Feb., Champaign Co (RC); 15 Feb. (2), DPCA (JM). MC: 60, Clin.L, 13 Mar. (RP). LD: 8 May (male), DPCA (JM). Others: 16-29 May, LCal (WM).

#### **Canvasback**

EA: 28 Feb., w. of LCal (WM). MC: 700, w. of Havana, 13 Mar. (MB); 40, MS, 26 Mar. (WS). LD: 28 May-5 June, Havana (KR); 20 May-1 June (female), Madison Co (KM). Others: 11, Wolf L., 7 Mar. (Jsa); 8, IBSP, 28 Mar. (JN).

*Male and female Canvasbacks, 21 March 1993, Brandon Road Lock and Dam, Will County.*

*Photo by Joe B. Milosevich.*

#### **Redhead**

EA: 14 Feb., Champaign Co (RP); 28 Feb. (increase of 6), Joliet (JM). MC: 150, Clin.L, 20 Mar. (RC); 27, Lake Zurich, 3 Apr. (DJ). LD: 25 May (female), Chi (Montrose) (KH); 23 May (male), LCal (WM); 20 May, Sang.L (DB).

#### **Ring-necked Duck**

EA: 2 Mar. (5), JP (HR). MC: 2,100, RLCA, 13 Mar. (MB); 400-1200, Clin.L, 20 Mar. (RP, RC); 100+, MS, 5 Apr. (WS). Others: 14 May, Mason Co (MB); 16-31 May (pr.), w. of LCal (WM); 22-31 May (3 males), Clin.L (RP); 28 May-5 June, Havana (KR).

#### **Greater Scaup**

EA: 15 Feb. (3), Rockford (DW); 1 Mar., Chi (KH). MC: 550, JP, 30 Mar. (HR). Others: 33, w. Will Co (3 places), 24 Mar. (JM).

#### **Lesser Scaup**

EA: 10 Feb., Rockford (JDo). MC: 2000+, Decatur, 11 Apr. (MD); 2000, Clin.L, 20 Mar. (RP); 1300, LCal, 3 Apr. (WM).

Others: 28 May-5 June (2 males), Havana (KR); 23 May-6 June (3), GLNTC (JN).

#### Harlequin Duck

20 Mar. (2), Chi (Miegs Airport) (RH); 15 Apr. (2 females), JP (DM).

#### Oldsquaw

LD: 26-28 Mar. (imm. male), Rockford (DW); 20 Mar. (8), Chi (RH).

#### Black Scoter

18 Feb. (female), Wilmette (JK).

#### Surf Scoter

EA: 6-8 Mar. (5), Chi (Calumet Park) (EW, m.ob.). LD: 12 Apr. (2), Sang-L (DB). Others: 13 Mar. (female), Clin.L. (RC); 20-29 Mar., Buckhart (DB); 21 Mar. (5—1 male), Wilmette (JK).

#### White-winged Scoter

EA: 5-6 Mar. (2 males), Wauk (JN, JHo); 6 Mar., JP (KC). MC: 4, Wauk, 7 Mar. (CP). LD: 25 Apr., L Decatur (MD, RP). Others: 7 Mar., Wilmette (JSa); 7 Mar., Glencoe (AS).

#### BARROW'S GOLDENEYE

7 Mar. (female), Calumet Park (\*AS). This was the only documented sighting in Illinois.

#### Common Goldeneye

MC: 465, Evanston, 12 Mar. (EW). LD: 8 May (female), Joliet (JM); 22 Apr. (female), Carl.L (KM).

#### Bufflehead

EA: 6 Mar., Clin.L (RC, RP); 12 Mar. (6 increase), Heidecke L (Grundy Co.) (JM). MC: 52, JP, 28 Mar. (HR); 50+, MS, 20 Apr. (WS); 50, Spfld, 31 Mar. (DB). LD: 9 May, Kane Co (fide EW); 8 May, s. Clinton Co (KM); 8 May, n.w. Lake Co (LB); 6 May (2), De Witt Co (RP). Others: 15-31 May (female), JP (DM, m.ob.) - rumored to be injured.

#### Hooded Merganser

EA: 10 Feb., Rockford (JDo). MC: 30, Clin.L, 20 Mar. (RC); 15, DPCA, 19 Mar. (JM); 12, LCal, 18 Apr. (WM). Others: many juv. & female plumaged birds reported throughout n.e. IL from 31 May-10 June (m.ob.). Common Goldeneye x Hooded Merganser hybrid: 7 Mar., Kemper L (DJ) - same as last year.

#### Common Merganser

MC: 1, 150, Will & Grundy Co, 19 Mar. (JM); 1050, Mason Co, 6 Mar. (RP); 350+, Saganashkee Slough, 7 Mar. (WS). LD: 1 May, Chi (KH). Others: 8-22 May (male), LCal (JL, RP, m.ob.);

#### Red-breasted Merganser

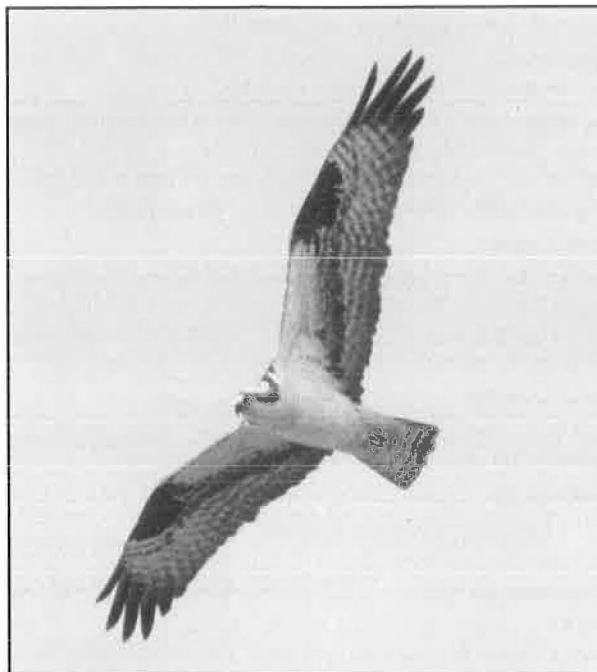
EA: 6 Mar. (4), Mason Co (RP). MC: 574, CONWR, 19 Mar. (TF). LD: 10 June (pr.), Wilmette (EW); 31 May, LCal (WM); 29 May, (4), Wauk (JN); 18 May (female), Dickson Mounds (KR).

#### Ruddy Duck

EA: 15 Feb., Decatur (MD); 12 Mar. (9), Heidecke L (JM); 28 Mar., Chi (KH). MC: 500, Madison Co, 13 Apr., (KM); 80, Spfld, 31 Mar. (DB); 60+, MS, 2 May (WS).

#### Turkey Vulture

EA: 25 Mar., Spfld (DB); 28 Mar. (3), Wauk (JN); 28 Mar. (2), s.e. Chi (WM). MC: 85, Grafton, 9 Mar. (KM); 16, s.w. Will Co, 8 May (JM); 13, Decatur, 10 Apr. (MD). LD: 24 May, CBG (LB).



*Osprey, 23 April 1993, Vernon Hills, Cook County.  
Photo by Rob Dicker.*

Others: 7, IBSP, 9 Apr. (BE); 6, JP, 27 Apr. (HR).

#### Osprey

EA: 3 Apr., Decatur (MD); 4 Apr., MS (MHa); 8 Apr., Riverdale (WM, m.ob.). MC: 6, CBG, 18 Apr. (LB). LD: 4 June, Stickney (Cook Co) (RHe); 24 May, CBG (LB); 23 May, Chi (RH).

#### Mississippi Kite

EA: 7 May (ad.), Peoria (KR, MB). Others: 2 May (2), Union Co (KM); 22 May (3), Pere Marquette S.P. (HW).

#### Bald Eagle

EA: 7 Mar. (4th yr.), Saganashkee Slough (WS); 7 Mar. (ad.), Palos (JL). MC: 6, Mason Co, 6 Mar. (RP); 4 (1 ad.), Heidecke L, 12 Mar. (JM). LD: 13 May, LShel (RP); 11 May (imm.), Banner (Fulton Co.) (KR); 8 May (imm.), Winnebago Co (DW). Others: 11 Mar. (2nd spring), Chi (EW); 24 Mar., Kane Co (DS); 9 Apr. (imm.), IBSP (BE).

#### Northern Harrier

EA: 8 Mar. (male), Chi (EW). MC: 8, IBSP, 9 & 18 Apr. (BE).. LD: 27 May, Tinley Park (WS); 8 May (female), Mason Co (KR).

#### Sharp-shinned Hawk

EA: 19 Mar., Orland Park (CT). MC: 17, IBSP, 9 Apr. (BE); 5, LCal, 18 Apr. (WM). LD: 10 May, Pere Marquette S.P. (DB et al.); 15 May, Lodge Park (RC).

#### Cooper's Hawk

MC: 4, IBSP, 9 Apr. (BE). Others: 5 seen in Chi, 18-25 Apr. (SSu, KH).

#### Northern Goshawk

EA: 12 Mar. (ad.), Homer L (RC); 22 Mar., n.e. Will Co (MHa, AD). LD: 21 Apr. 5 May, JP (HR, RH, Tbi, m.ob.); 1 May (ad.),



IBSP (fide RB); 18 Apr. (ad.), e. Knox Co. (MB). Others: 26 Mar., Decatur (RP); 3 Apr. (1st yr.), Urbana (RC).

#### **Red-shouldered Hawk**

EA: 8 Feb., Spfld (DB); 10 Feb., Rockford (JDo). MC: 4, Pomona, 6 Mar. (Jackson Co.) (KM); 2, Lockport, 29 Mar. (JM). LD: 24 Apr., JP (SSu). Overwintering bird in s.w. Cook Co. last seen on 11 Mar. (WS).

#### **Broad-winged Hawk**

EA: 11 Apr., Urbana (RC); 17 Apr. (2), Skokie Lagoons (JS); 18 Apr. (4), CBG (LB). MC: 27, Spfld, 19 Apr. (DB); 7, s.e. Cook Co (WM). LD: 26 May (imm.), CBG (LB); 24 May, Evanston (EW); 3 June (subad.), Sang. L (DB).

#### **Red-tailed Hawk**

EA: 18 Mar., JP (HR). MC: 30, IBSP, 9 Apr. (BE). LD: 17 Apr., JP (HR). Others: 26 Mar., (11), Clinton Co (KM); 24 May, Chi (KH). "Dark morph": 19 Mar., DPCA (JM) -same bird as last year?

#### **Rough-legged Hawk**

LD: 2 Apr., Sang.L (DB); 28 Mar. (dark), s.e. Cook Co (WM).

#### **Golden Eagle**

6 & 27 Mar., Pomona (Jackson Co.) (KM).

#### **American Kestrel**

MC: 9, Clin.L, 27 Mar. (RP); 8 (migrants), IBSP, 9 Apr. (BE).

#### **Merlin**

EA: 7 Mar., Wauk (CP). MC: 3, IBSP, 18 Apr. (BE); 2, Chi, 12 May (RH, SSu). LD: 12 May, as above; 6 May, Spfld (DB); 1 May, Lodge Park (RC). 11 other April records.

#### **Peregrine Falcon**

EA: 15 Apr., Decatur (MD); 18 Apr., IBSP (BE); 25 Apr., LCal (WM); . LD: 2-4 May, JP (SSu); 29 Apr., Evanston (EW).

#### **Greater Prairie-Chicken**

MC: 60, three s.e. IL sites, early Mar. (fide EW) — all-time low numbers.

#### **Wild Turkey**

25 Mar. (2), s.w. of Spfld (DB).

#### **Northern Bobwhite**

MC: 10, Spfld, 28 Mar. & 16 Apr. (DB).

#### **Yellow Rail**

EA: 17 Apr., Clin.L (\*RC); 25 Apr., Van Patten Woods F.P. (Lake Co) (JN). LD: **22 May**, Chi (JL, KH, RH, m.ob., See Seasonal highlights); 4 May, Vermilion Co (JS).

#### **King Rail**

EA: 21 Apr., Arcola (Douglas Co.) (RC). LD: 15 May, Fullerton Park F.P. (DuPage Co) (\*EBu et al.); 14 May, Matanzas Prairie (Mason Co) (KR, MB). Others: 2 May, Mermet L C.A. (TF, KM); 6-8 May, Sang.L (DB) - first in years in this area; 22 May (pr.), GLPSP (RP) - probable nesting.

#### **Virginia Rail**

EA: 10 Apr., s.e. Cook Co (WM); 18 Apr., n.e. Du Page Co (EBu). MC: 16, IBSP, 8 May (DD). Others: 14 May, Mason Co (KR, MB); 6 May, Clin.L (RP); 5 May, Chi (RH).

#### **Sora**

EA: 6 Apr., Sang.L (DB); 7 Apr., Skokie (fide RB); 16 Apr. (3),

n.e. Du Page Co (EBu). MC: 19, Spfld, 26 Apr. (DB); 18, w. Will Co (2 places), 8 May (JM). LD: 31 May, JP (HR); 21 May, Chi (RH); 15 May, Clin.L (EC, RC).

#### **Common Moorhen**

EA: 20 Apr., Joliet (\*JM-roadkill); 25 Apr. (3), LCal (WM). MC: 11, LCal, 8 May (WM). Others: 6 May, near CNC (EW).

#### **American Coot**

EA: 20 Mar., Clin.L (RC); 28 Mar. (3), Chi (KC, KH). MC: 500, Madison Co, 30 Mar. (KM); 400, Spfld, 31 Mar. (DB); 350+, MS, 2 Apr. (WS). LD: 25 May (2), Decatur (RP); 21 May, JP (HR).

#### **Sandhill Crane**

EA: 9 Mar. (50), Harvey (Cook Co) (WS). MC: 200, M.Arb, 28 Mar. (RCo); **176**, Urbana, 26 Mar. (RW, LL, m.ob.); **70+**, Vermilion Co, 26 Mar. (JS); **73**, Evergreen L (McLean Co), 27 Mar. (fide DB). LD: **7 June**, Decatur (MD); 29 May, Johnson Co (TF); **9 May**, s.w. Spfld (DB) - 2nd Co record in 23 years. Others: **55**, Urbana/Champaign, 27 Mar. (fide RC); **39**, Decatur, 26 Mar. (RP); **35**, Clin.L, 27 Mar. (RP, RC); **27**, Watseka, 26 Mar. (PM); 27 Mar. (2), UCCA (KM); 28 Mar. (2), IBSP (JN); 6 May (2), North Chicago (DJ). At least 6 county high counts set on the 26-27 Mar. weekend. Very few records from n.e. IL. - migration mostly bypassed n.e. IL and traveled through e.c. and central IL.

#### **Black-hellied Plover**

EA: 6 May (2), s. Kane Co (AS). MC: 40, Dickson Mounds, 19 May (KR); 11, s. Kane Co, 20 May (AS). LD: 25 May (2), Decatur (RP); 25 May, Elburn (Kane Co) (JM); 21 May (3), s. Clinton Co (KM).



*Yellow Rail, 22 May 1993, Montrose Harbor, the Magic Hedge, Cook County.*

*Photo by Kanae Hirabayashi.*

#### **American Golden-Plover**

EA: 11 Mar. (10), Alexander Co (TF); 28 Mar. (10), Rantoul (RC). MC: 5000-7500, n. Macon Co, 25-26 Apr. (MD, RP). LD: 8 June (ad.), Chi (RH); 22 May, Clin.L (RP). Others: 6 May (3), s. Kane Co (AS).

#### **Semipalmated Plover**

EA: 28 Apr. (5), Winnebago Co (DW); 29 Apr. (2), Berry (DB). MC: 23, O'Hare Airport, 28 May (RB). LD: 7 June (but 10 there on 6 June), O'Hare Airport (RB); 6 June (2), Decatur (MD).

### Killdeer

EA: 25 Feb., Peoria Lock & Dam (KR); 7 Mar., Lake Co (CP); 7 Mar., M. Arb (RCo); 7 Mar. (3), Palos (JL). MC: 81, Evanston, 26 Mar. (EW), downed by fog.

### BLACK-NECKED STILT

8 May (2), s.w. Carroll Co (2 miles from lock & dam #13) (LJ).

### American Avocet

EA: 16 Apr., Candlewick L (Boone Co) (\*AB). MC: 17, Spfld, 20-21 Apr. (DB).

### Greater Yellowlegs

EA: 26 Mar. (14), s. Clinton Co (KM); 3 Apr., n.w. Will Co (JM). MC: 26, Spfld, 23 Apr. (DB); 22, n.w. Will Co, 1 May (JM); 21, Chi, 29 Apr. (DM). LD: 31 May (2), Clin.L (MD); 24 May, Harrisburg (Saline Co.) (JD).

### Lesser Yellowlegs

EA: 28 Mar (2), Rantoul (RC); 30 Mar., near CNC (RPe). MC: 200, n. Macon Co, 23 Apr. (MD); 84, n.w. Will Co, 1 May (JM). L.D: 24-25 May (2), O'Hare Airport (RB); 21 May (2), s. Clinton Co (KM).

### Solitary Sandpiper

EA: 10 Apr., Clin.L (RP); 28 Apr. (5), CBG (LB). MC: 19, LCal, 8 May (WM, JL). LD: 23 May (3), O'Hare Airport (RB); 18 May, Sang.L (DB).

### Willet

EA: 25 Apr. (3), Chi (RH). MC: 16, L Charleston, 8 May (BH); 8, Havana, 30 Apr. (KR); 7, Decatur, 29 Apr. (MD); 5, Chi, 28 Apr. (RH); 5, Chi, 4 May (DM). LD: 10 May (2), c. Lake Co (DJ); 10 May, Chi (ASi).

### Spotted Sandpiper

EA: 30 Mar., Sang.L (DB); 21 Apr., JP (HR). MC: 34, LCal, 8 May (WM, JL); 20, Chi, 28 Apr. (RH). LD: 30 May, JP (HR); 29 May, Chi (KH); 21 May, s. Clinton Co (KM).

### Upland Sandpiper

EA: 14 Apr., Spfld (DB); 23 Apr. (3), Decatur (MD). Others: 18 Apr. (3), Jackson Co (TF); 22 May, Danville (RC).

*Ruddy Turnstone, 13 April 1993, Heidecke Lake, Grundy County. Photo by Joe B. Milosevich.*



### Whimbrel

23 May (3), Wauk (JG); LD: 26 June, Decatur (ad. , breeding plumage) (\*RP, \*MD, m. ob.).

### Hudsonian Godwit

EA: 26 Apr., Oreana (Macon Co) (RP, MD). LD: 17 May (3), Dickson Mounds (KR).

### Marbled Godwit

LD: 26 June, Snicarte (Mason Co.) (DB).

### Ruddy Turnstone

EA: 12 May, Heidecke L (JM); 15 May, Chi (KH). MC: 20, Chi, 24 May (RH); 6, Decatur, 25 May (MD, RP). LD: 6 June, Wauk (JN); 28 May, Joliet (JM, m.ob.). Others: 18 May (4 males), Bloomingdale (Du Page Co) (BF, MS); 24 May (3), Heidecke L (JM); 25 May (2), O'Hare Airport (RB).

### Red Knot

EA: 25 May, Chi (RH).

### Sanderling

EA: 2 May (winter plumage) & 9 May (6), Wauk (JN). MC: 63, Wauk, 24 May (JN); 20, Decatur, 24-25 May (MD); 20, Evanston, 26 May (EW). LD: 5 June (4), Havana (KR); 2 June, Wauk (JN). Others: 31 May (4), Joliet (JM); 26-28 May, O'Hare Airport (RB); 25-26 May (in winter plumage), Spfld (DB); 24 May (16), Heidecke L (JM); 17 May, Dickson Mounds (KR).

### Semipalmated Sandpiper

EA: 6 May, Sang.L (DB); 14 May, LCal (WM). MC: 250,



*Sanderling, 13 May, 1993, Heidecke, Lake, Grundy County. Photo by Joe B. Milosevich.*

Decatur, 1 June (MD); 79, O'Hare Airport, 25 May (RB). LD: 7 June (8), O'Hare Airport (RB); 6 June (70), Decatur (MD); 8 June (75), Decatur (RP).

### Western Sandpiper

EA: 17 May, Dickson Mounds (KR); 20 May, Spfld (DB). MC: 6, Clin.L, 22 May (RP); 6, Decatur, 31 May (MD). LD: 6 June (2), Decatur (MD).

### Least Sandpiper

EA: 28 Apr. (5), JP (HR). MC: 175, Decatur, 25 May (RP); 60,

LCal, 15 May (WM); 55, O'Hare Airport, 21 May (RB). LD: 29 May (3), O'Hare Airport (RB); 28 May (5), Decatur (RP).

#### **White-rumped Sandpiper**

EA: 10 May, c. Lake Co (DJ); 21 May, O'Hare Airport (RB). MC: 50, Decatur, 25 May (RP); 22, Mason Co (2 sites), 5 June (KR); 4, Heidecke L., 24 May (JM); 3, LCal, 23 May (WM). LD: 10 June (25), Decatur (RP); 6 June, Wauk (JN).

#### **Baird's Sandpiper**

EA: 1 May, Lodge Park (Piatt Co) (RC). Others: 6 May, Dewitt Co (MD, RP).

*American Woodcock, 28 March 1993, North Pond in Lincoln Park, Cook County. Photo by Kanae Hirabayashi.*



#### **Pectoral Sandpiper**

EA: 23 Mar., s.w. of Spfld (DB); 30 Mar. (8), Palos West Slough (WS). MC: 2000, Maroa (Macon Co), 26 Apr. (RP); 275, n.w. Will Co, 1 May (JM). LD: 25 May (2), Decatur (MD); 25 May (3), Elburn (Kane Co) (JM).

#### **Dunlin**

EA: 8 May (3), IBSP (DD); 14 May (13), LCal (WM). MC: 75, Winnebago Co, 23 May (DW); 34, LCal, 23 May (WM); 20, Decatur, 24 May (MD). LD: 5 June, Decatur (MD); 4 June, Joliet (JM); 31 May (33), LCal (WM).

#### **Stilt Sandpiper**

LD: 1-3 June, Decatur (MD). Others: 21 & 28 May, Havana (KR); 24 May, Spfld (DB); 15-16 May, LCal (WM).

#### **Short-billed Dowitcher**

EA: 3 May, Macon Co (MD); 15 May (2), LCal (WM). LD: 29 May, Sang.L (DB). Very few records, no flocks.

#### **Long-billed Dowitcher**

EA: 3 Apr., Buckhart (Sangamon Co.) (RP, MD). LD: 5 May, Sang.L (DB); 2 May, Centerville (RC).

#### **Common Snipe**

EA: 21 Mar. (2), Urbana (RC); 27 Mar., Chi (GW). MC: 50+, Clin.L, 17 Apr. (RC); 38, Jackson Co, 22 Apr. (KM); 12, Palos West Slough, 4 Apr. (CT). LD: 8 May, w. of Victoria (Knox Co.) (MB); 8 May, LCal (WM); 8 May, JP (HR); 5 May, Sang.L (DB).



*Ring-billed Gull, Spring 1993, Evanston, Cook County. Photo by Ken Oberlander.*

#### **American Woodcock**

EA: 9 Feb. (3), Carl.L. (KM); 7 Mar. (5), Urbana (RC); 9 Mar. (4), Palos Heights (WS). MC: 25, e. Knox Co, 7 Apr. (MB); 12, LaGrange (Cook Co), 3 Apr. (m.ob.); 9, Chi, 28 Mar. (JL). LD: 11 Apr., JP (fide HR).

#### **Wilson's Phalarope**

EA: 24 Apr. (2), Alexander Co (Tl); 28 Apr. (female), Winnebago Co (DW); 1 May (female), Glacial Park (McHenry Co) (AS). LD: 18-19 May, O'Hare Airport (RB); 18 May (female), LCal (SF). Others: 2 May, Centerville (RC); 5 May (female), Sang.L (DB); 5 May (female), Havana (KR).

#### **Red-necked Phalarope**

LD: 5 June (pr.), Havana (KR); 25 May (male), Decatur (RP, MD).

#### **Laughing Gull**

EA: 25 May, Chi (CM). LD: 10 June (subad.), Chi (RH); 6 June (ad.), Chi (RH).

#### **Franklin's Gull**

EA: 20 Mar., Spfld (DB); 11 Apr., Decatur (MD); 23 Apr., Chi (RH). MC: 10, Dickson Mounds, 28 May (KR); 5, Wauk, 26 May (JN). LD: 3 June, Chi (KH, GW); 28 May, as above. Others: 25 May, Evanston (EW); 27 May (1st summer), Joliet (JM). Fewer reports compared to prior springs..

#### **Bonaparte's Gull**

EA: 3 Mar. (ad. summer), Chi (KH); 19 Mar., Fermi (PK); 30 Mar. (12), Evanston (EW). MC: 800, CONWR, 12 Apr. (KM); 400, Clin.L, 10 Apr. (RP, MD); 350+, Boone Co (ABr). LD: 5 June (1st summer), Joliet (JM); 20 May (1st summer), Spfld (DB). Others: 3 May, near Hebron (RBA).

#### **MEW GULL**

5 Mar. (ad. summer), L Decatur (near the marina) (\*MD).

#### **Ring-billed Gull**

MC: 12,000+, LCal, 10 Apr.+ (WM); 2700, Carl.L, 26 Mar. (KM); 2,000, L Decatur, 6 Mar. (RP). Increasing in numbers.

#### **Herring Gull**

MC: 2000, LCal, 20 Mar. (WM); 1450+, Chi, 6 Mar. (EW); 150,

L Decatur, 6 Mar. (RP). LD: 28 May (1st summer), Dickson Mounds (KR).

#### Thayer's Gull

MC: 4, Chi, 11 Mar. (RH). LD: 16-24 May (1st summer), Wauk (JN, DW); 3-16 May (3rd summer), Wauk (JN, DW). Others: 13 Mar. (ad.), RLCA (MR); 7 Apr., CRG (LB).

#### Iceland Gull

LD: **2 & 3 May** (1st winter), GLNTC & Wauk (JN) - (as close as 25 ft. and compared to Glaucous). Others: 23 Mar. (1st winter), Evanston (EW); 7 Mar. (ad.), Clin.L (RC).

#### Lesser Black-backed Gull

EA: 5 Mar.-23 Apr. (ad.), Chi (Montrose) (m.ob. of periodic sightings); 7 Mar. (2—1st winter & 2nd winter), Clin.L (RC); 16 Mar., LCal (GW). LD: **2 June** (3rd summer), Wauk (JN). Others: 21 Mar. (2nd yr.), Spfld (DB); 25 Mar. (ad.), Grayslake (Lake Co) (DJ); 16 Apr. (ad.), s.w. Spfld (DB).

#### Glaucous Gull

MC: 7, LCal, 21 Mar. (DM) — 3 present in March prior to this date (m.ob.). LD: **23-29 May** (2nd summer, a bird with dark feathers in secondary), Wauk (JN); **27 May**, Chi (Montrose) (RH) & **24 May**, Evanston (EW); 3-23 May, Wauk (JN) — a different 2nd summer bird; 13 May (3rd yr.), Wauk (DJ). Others: 1 Mar., Carl.L (MSe).

#### Great Black-backed Gull

LD: **3 June** (2nd summer), Wauk (JN); **21 May** (ad. summer), Wauk (JN).

#### BLACK-LEGGED KITTIWAKE

8 May, Wauk (\*RH, AS); 28 May, Chi (Montrose) (RH); 3 June, Wauk (JN). All three records represent the same individual in 1st-summer plumage (see photographs). See seasonal highlights.

#### Caspian Tern

EA: 10 Apr. (2), Spfld (DB); 11 Apr. (2), Evanston (EW); 11 Apr., Chi (KH). MC: 47, Wauk, 20 Apr. (DD); 26, Evanston, 8 May (EW). LD: 2 June, GLNTC (JN); 29 May, Spfld (DB).

#### Common Tern

EA: 28 Apr. (2), Evanston (EW). MC: 80, Spfld, 18 May (DB). LD: 5 June (2), Joliet (JM); 31 May (3), Clin.L (MD); 29 May, Chi (KH). Very low concentrations.

#### ARCTIC TERN

27 May (ad.), Joliet (\*JM, \*m.ob.-ph.). See seasonal highlights.

#### Forster's Tern

EA: 11 Apr., Chi (KH). MC: 57, JP, 8 May (m.ob.). LD: 9 June (15) HL (KM); 29 May, Chi (KH); 26 May, Evanston (EW); 24 May (3, 1st summer), Spfld (DB); 21 May (22), Carl.L (KM). Others: 15, Will & Grundy Co, 30 Apr. (JM).



*Adult Arctic Tern, 27 May, 1993, Brandon Road Lock and Dam, Will County, second Illinois record. Photo by Joe B. Milosevich.*

#### Black Tern

EA: 2 May, McHenry Dam (RGo); 6 May, near CNC (JCs). MC: **81**, Newton L, 5 June (RC); 40, Decatur, 5 June (MD); 7, Heidecke L, 24 May (JM). LD: 5 June (10), Havana (KR); 4 June (2), Joliet (JM); 4 June (subad.), Spfld (DB).

*Adult Arctic Tern, 27 May, 1993, Brandon Road Lock and Dam, Will County, second Illinois record.*

*Photo by Joe B.*

*Milosevich.*



#### Mourning Dove

MC: 75, LCal, 8 May (WM, JL).

#### Monk Parakeet

MC: **43**, JP, 5 Mar. (HR). Others: 1 Mar.+ (5), Bensenville (Du Page Co) (m.ob.); 2 Mar., Zion (JN); 25 Apr. (3), IBSP (SH); 8 May, Evanston (EW); 8 May (5), IBSP (DD); 26 May, Evanston (EW). Nesting in at least 3 sites in s. Cook Co. as well as n.e. Lake Co. & various Du Page Co. locations (m.ob.).

#### Black-billed Cuckoo

EA: 7 May, Urbana (RC); 8 May (4), Du Page Co (m.ob.). LD: 27 May, Chi (KH); 21 May, s. Clinton Co. (KM); 6 June, s. Madison Co. (KM).

#### Yellow-billed Cuckoo

EA: 1 May, Lodge Park (Piatt Co.) (RC); 8 May (7), Du Page Co (m.ob.). MC: 10, Spfld, 12 May (DB). LD: 6 June, Chi (RH).

#### Barn Owl

Others: 10 May, Ozark (Johnson Co) (TF) - ad. flyby giving contact call.

*Juvenile Barred Owl, May 1992, Horseshoe Bottom Nature Preserve. Photo by James O. Smith.*



### Eastern Screech-Owl

MC: 42, Cook Co, 5-7 Mar. (fide SL) - 19 parties in 62 hours.

### Great Horned Owl

MC: 25, Cook Co, 5-7 Mar. (fide SL) - 19 parties in 62 hours.

### Snowy Owl

MC: 3, Chi (Meigs Airport), 14 Mar. & 8 Apr. (ASc & RH). LD: 10 Apr., Chi (Meigs Airport) (RH); 30 Mar., Hayes (Douglas Co.) (fide RC). Others: 29 Mar., JP (fide HR). 1-2 present nearly daily at Meigs during Mar. (EW, RH).

### Barred Owl

MC: Others: 5-7 Mar., n.w. Chicago (calling from F.P.) (JGa); 5-7 Mar., Palos (Cranberry Slough) (DN); 8 May+ (pr.), Plum Creek F.P. (Cook Co) (fide EW).

### Long-eared Owl

MC: 10, s.w. Cook Co., 6 Mar. (WS). Others: 2 Mar. (2), Libertyville (\*\*EW); 14-18 Mar., Homer L. (Champaign Co.) (RC, JS); 14 Mar., Fermi (JP).

### Short-eared Owl

EA: 14 Mar., e. Knox Co (MB); 27-28 Mar., Chi (GW, KH). MC: 4, n. of Victoria (Knox Co.), 20 Mar. (MB). LD: 7 Apr., Chi (DM).

### Common Nighthawk

EA: 1 May, Urbana (RC); 4 May, JP (Tbi). MC: 31, CBG. 12 May (LB).

### Chuck-will's-widow

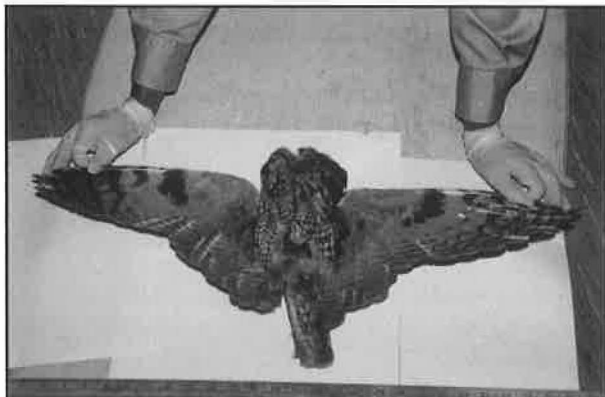
EA: 30 Apr. (2), SRSF (KR); 8 May, Mahomet (Champaign Co.) (EC). LD: 22 May, MFWA (RC). Others: 10 & 14 May, Quiver Marsh (Mason Co) (MB, VK, DB, et al.).

### Whip-poor-will

EA: 30 Mar., Johnson Co (TF); 25 Apr. (2), JP (HR, AS). MC: 36, e.c. Knox Co, 8 May (MB); 30, MFWA, 22 May (RC). LD: 23 May, Chi (backyard) (RH); 17 May, JP (HR). Others: 29 Apr., West Chicago (MS)

*Long-eared Owl, 19 May 1993, found dead at Nachusa Grasslands. Note brood patch exposed in center of bird's body which confirms nesting at this site.*

*Photo by Wally Janoskey.*



### Chimney Swift

EA: 8 Apr. (6), Pulaski Co (KM); 11 Apr. (4), Spfld (DB); 22 Apr. (4), JP (HR). MC: 1500, Joliet, 27 & 31 May (JM).

### Ruby-throated Hummingbird

EA: 19 Apr., Urbana (RC); 19 Apr., Pomona (Jackson Co.) (KM); 1 May, Chi (CA). MC: 6, Clinton Co. 8 May (KM). LD: 29 May, Chi (KH); 26 May, Evanston (EW).

### Belted Kingfisher

EA: 20 Mar. (4), Sangamon Co (DB); 26 Mar., JP (KC). LD: 30 Apr., Chi (KH).

### Red-headed Woodpecker

EA: 9 Apr., Spfld (DB); 28 Apr., JP (SSu). MC: 9, Spfld, 25 Apr. (DB). LD: 24 May, Chi (KH).

### Red-bellied Woodpecker

MC: 15, Spfld, 29 Apr. (DB). Others: 3, CBG, 18 May (LB). **Yellow-bellied Sapsucker**

EA: 30 Mar., Somonauk (De Kalb Co) (DS); 3 Apr. (3), Chi (KC, KH). MC: 12, Urbana, 18 Apr. (RC); 9, JP, 21 & 24 Apr. (HR). LD: 23 May, Chi (Zoo) (RH); 15 May, JP (SSu).

### Northern Flicker

EA: 20 Mar. (11), Sangamon Co (DB); 31 Mar., JP (HR). MC: 38, JP, 26 Apr. (HR).

### Pileated Woodpecker

EA: 17 Apr., Spoon L (Knox Co) (MB); 21 Apr., Woodstock (fide BM). MC: 4, Spfld, 3 May (DB). LD: 18 May, CBG (JSt). Others: 12 Mar. (2), Vermillion Co (JS); 6 May, Downers Grove (Du Page Co) (HC, AW, m.ob.); 8 May (male), Ryerson C.A. (Lake Co.) (DJ).

### Olive-sided Flycatcher

EA: 4 May, Ozark (TF); 7 May, Urbana (RC); 8 May, Skokie Lagoons (JP); 12 May, JP (SSu). LD: 7 June, Spfld (DB); 8 June, Chi (RH); 26 May, Ozark (TF).

### Eastern Wood-Pewee

EA: 24 Apr., JP (SSu). MC: 40, Chi, 23 May (RH); 20, Urbana, 16 May (RC). LD: 31 May, Chi (KH).

### Yellow-bellied Flycatcher

EA: 8 May (2), Mason Co (KR); 9 May (2), JP (SSu). MC: 25, Chi, 23 May (RH); 9, Urbana, 16 May (RC). LD: 28 May, RLCA (KR); 5 June (2) Spfld (DB); 5 June, Chi (JL).

### Acadian Flycatcher

EA: 23 Apr., Pomona (Jackson Co.) (KM); 29 Apr., Spfld (DB); 1 May, Lodge Park (Piatt Co.) (RC); 4 May, JP (SSu). MC: 4, Shelby Co, 13 May (RP); 3, JP, 25 May (SSu). LD: 7 June, Wolf L (Cook Co) (WM); 6 June, Downers Grove (fide EW); 30 May, Spfld (DB).

### Alder Flycatcher

EA: 8 May, Spfld (DB); 11 May, JP (SSu). MC: 5, MFWA/KCP, 22 May (RC); 4, CBG, 26 May (LB). LD: 12 June (2), Palos area (WS); 5 June, Clay Co (RC); 5 June, Mason Co (KR), 5 June, Spfld (DB).

### Willow Flycatcher

EA: 3 May, JP (HR). MC: 23, LCal, 22 May (RP); 11, JP, 28 May

(HR). LD: 31 May, Chi (KH); 5 June, Chi (JL).

#### **Least Flycatcher**

EA: 20 Apr., Spfld (DB); 28 Apr., CBG (LB); 28 Apr., Evanston (EW). MC: 21, Evanston, 8 May (EW); 20, Piatt Co, 15 May (RC, EC). LD: 29 May, Chi (KH); 1 June, Spfld (DB); 6 June, JP (HR).

#### **Eastern Phoebe**

EA: 21 Mar., Urbana (RC); 26 Mar., JP (HR). MC: 19, Evanston, 31 Mar. (EW) — all grounded on beach; 13, JP, 17 Apr. (HR). LD: 9 May, Chi (KH).

#### **Great Crested Flycatcher**

EA: 14 Apr., Pomona (Jackson Co.) (KM); 21 Apr., Urbana (RC); 24 Apr. (3), Chi (SSu, KH). MC: 20, Chi, 9 May (RH). LD: 31 May, Chi (KH).

#### **Western Kingbird**

EA: 5 May, Bondville (Champaign Co) (RC). LD: 31 May, **Waterfall Glen F.P.** (Du Page Co) (DT); 28-29 May, **Tinley Park's Siesman Meadow** (Cook Co) (PW, \*m.ob.-ph.).

#### **Eastern Kingbird**

EA: 14 Apr. (2), Jackson Co (KM); 19 Apr., Evanston (EW); 29 Apr., Evanston (EW). MC: 30, Union Co, 4 May (TF); 19, Spfld, 8 May (DB); 13, Evanston, 8 May (EW); 13, JP, 9 May (HR). LD: 30 May (migrant), n.w. of Spfld (DB).

#### **Horned Lark**

EA: 2 Feb. (5 — individuals migrating north), Wilmette (EW); 4 Feb. (2), Chi (RH). MC: 5,000, DeWitt Co, 27 Feb. (RP, MD); 175, Will Co, 22 Feb. (JM). LD: 18 Apr. (2), CBG (LB).

#### **Purple Martin**

EA: 19 Mar. (4), Alexander Co (TF); 1 Apr., s.w. Spfld (DB); 18 Apr., CBG (LB); 18 Apr., Chi (KH). LD: 24 May (20), Heidecke L (JM); 20 May (5), Chi (SSu, KH).

#### **Tree Swallow**

EA: 6 Mar., Jackson Co (KM); 14 Mar., LCal (WM). MC: 2500+ (flying south down lakefront), Highland Park (Lake Co), 11 Apr. (DDn); 2500, Union Co, 16 Apr. (KM); 500, Monmouth, 20 Apr. (MB). LD: 22 May, Chi (KH).

#### **Northern Rough-winged Swallow**

EA: 30 Mar. (2), Decatur (MD); 30 Mar. (2), Buckhart (DB); 9 Apr., Chi (HR). MC: 115, Union Co, 16 Apr. (KM); 25, JP, 13 May (HR).

#### **Bank Swallow**

EA: 3 Apr., Sang.L (DB); 16 Apr. (3), Evanston (EW). MC: 130, LCal, 8 May (WM, JL). LD: 24 May (10), Heidecke L (JM).

#### **Cliff Swallow**

EA: 12 Apr. (2), Sang.L (DB); 15 Apr. (6), Decatur (MD); 30 Apr., CBG (LB). LD: 29 May, Champaign Co (RC); 24 May (2), Heidecke L (JM).

#### **Barn Swallow**

EA: 27 Mar., Mahomet (Champaign Co.) (RC); 10 Apr. (3), Chi (HR, KH). MC: 76, LCal, 8 May (WM, JL).

#### **Blue Jay**

EA: 14 Apr. (16), Jackson Co (KM); 24 Apr. (6), Chi (EW, m.ob.). MC: 67, Evanston, 8 May (EW).

#### **American Crow**

MC: 75, Clin.L, 13 Mar. (RP); 65, JP, 18 Mar. (HR).

#### **Fish Crow**

EA: 4 Mar. (7), Alexander Co (TF). MC: 78, Alexander Co, 28 Mar. (TF). Others: 18 Apr., s. Clinton Co. (MSe).

#### **Tufted Titmouse**

MC: 21, Spfld, 25 Apr. (DB). Others: 15 & 22 May, Chi (KH & LB).

#### **Red-breasted Nuthatch**

LD: 8 May, Joliet (CA); 8 May, Rockford (DW); 21 Apr., Urbana (RC). Only reports.

#### **White-breasted Nuthatch**

EA: 2 May, JP (SF). LD: 13 May, JP (SSu).

#### **Brown Creeper**

EA: 29 Mar., Chi (KH). MC: 10, Urbana, 11 Apr. (RC). LD: 9 May, JP (HR).

#### **Carolina Wren**

MC: 11, Spfld, 29 Apr. (DB). Others: 3 Mar.- 14 Apr., Chi (RH, KH); 6 Mar. (pr.), GLNTC (JN); 1 May, JP (HR); 10 May, Chi (RH); 15 May (2), Skokie Lagoons (JG, et al.). Not as conspicuous this springs in n.e. IL.

#### **Bewick's Wren**

EA: 2-6 Apr., Urbana (RC).

#### **House Wren**

EA: 6 Apr., s. of Wataga (MB); 15 Apr., JP (SSu); 15 Apr., Urbana (RC); 17 Apr., Chi (KH); 24 Apr. (7), Chi (EW). MC: 32, Macon Co, 8 May (RP).

#### **Winter Wren**

EA: 21 Mar., Urbana (RC); 30 Mar. (2), Palos (CT). MC: 18, Urbana, 4 Apr. (RC); 4, Palos F.P., 6 Apr. (CT). LD: 15 May, Skokie Lagoons (JG et al.); 7 May, JP (HR). Others: 1 Mar., Chi (KH); 7 Mar., M.Arb (RCo) - both probably overwintering.

#### **Sege Wren**

EA: 24 Apr. (2), Chi/JP (JMy, SSu); 30 Apr., Wheaton (MS, BF). LD: 25 May (2), JP (SSu). Others: 2 May (2), e. Knox Co (MB).

#### **Marsh Wren**

EA: 24 Apr., Clin.L (RC); 25 Apr., JP (SSu). MC: 12, LCal, 8 May (WM, JL). LD: 31 May, Chi (KH); 22 May, Sang.L (DB).

#### **Golden-crowned Kinglet**

EA: 30 Mar. (3), CBG (LB). MC: 60, Urbana, 11 Apr. (RC). LD: 8 May, M.Arb (fide EW); 1 May, Urbana (RC); 20 Apr. (2), CONWR (KM).

#### **Ruby-crowned Kinglet**

EA: 31 Mar. (4), Sangamon Co (DB); 3 Apr., M.Arb (m.ob.). MC: 75+, Urbana, 25 Apr. (RC); 75, JP, 2 May (HR). LD: 25 May, JP (SSu); 21 May, RLCA (KR); 1 June (singing), Spfld (DB); 7 June, Evanston (JK);.

#### **Blue-gray Gnatcatcher**

EA: 1 Apr., Pomona (KM); 3 Apr. (2), Mason Co (KR); 18 Apr., Chi (North Park) (fide RB); 23 Apr. (8), JP (HR). MC: 28, e.c. Knox Co, 8 May (MB); 27, COLSP, 8 May (LB); 18, JP, 26 Apr.





*Swainson's Thrush, 17 April 1993, Lincoln Park Bird Sanctuary, Cook County. Photo by Kanae Hirabayashi.*

(HR). LD: 24 May, CBG (LB). Numbers continue to increase in n.e. IL.

#### **Eastern Bluebird**

EA: 25 Jan., Spfld (DB); **18 Feb. (2 males)**, near Joliet (PMe). MC: 30+, M.Arb, 8 May (fide EW). LD: 26 May, Evanston (EW).

#### **Veery**

EA: 28 Apr., Urbana (RC); 30 Apr., CBG (LB); 30 Apr., JP (SSu). MC: 10, Macon Co, 8 May (RP); 9, CBG, 16 May (LB); 9, Chi, 5 May (EW). LD: 29 May (2), Chi (HR, KH); 26 May, Spfld (DB); 5 June (singing), Spfld (DB); **13 June**, Chi (RH);.

#### **Gray-checked Thrush**

EA: 24 Apr., Chi (EW); 25 Apr., Urbana (RC); 28 Apr., Chi (KH). MC: 7, Clinton Co, 8 May (KM et al.); 5, JP, 25 May (SSu). LD: 29 May, JP (HR); 25 May (2), Sangamon Co (DB).

#### **Swainson's Thrush**

EA: 12 Apr., Pine Hills (Union Co.) (KM); 17 Apr., Chi (KH). MC: 75, Chi, 23 May (RH); 37, Macon Co, 8 May (RP). LD: 31 May (2), Spfld (DB); 1 June, Rockford (DW); 5 June (2), JP (HR).

#### **Hermit Thrush**

EA: 27 Mar., Chi (GW). MC: 117+, Chi/JP, 24 Apr. (SSu, EW). LD: 13 May, Chi (KH); 8 May, Piatt Co (RC); 26 Apr., Pomona (Jackson Co.) (TF, KM).

#### **Wood Thrush**

EA: 18 Apr., Urbana (RC); 25 Apr. (2), (SSu). MC: 15, Shelby Co, 13 May (RP); 11, Chi, 5 May (EW). LD: 25 May, JP (SSu).

#### **American Robin**

EA: 20 Feb. (+), Evanston (EW). MC: 1045+, e. Knox Co, 2 Apr.

(MB); 225, JP, 10 Apr. (HR).

#### **Gray Catbird**

EA: 20 Apr., CONWR (KM); 25 Apr., Urbana (RC); 28 Apr. (6), Cook Co (m.ob.). MC: 61, Chi, 5 May (EW); 43, L.Cal, 8 May (WM, JL). LD: 23 May, Evanston (EW).

#### **Northern Mockingbird**

EA: 28 Mar., Berry (Sangamon Co.) (DB); 9 Apr., Skokie (fide RB); 17 Apr., Chi (RPe). MC: 6, s.w. Will Co, 8 May (JM). LD: 6 June, Chi (Montrose Cemetery) (DBr). Others: 2, Palos, 8 May (SF, PD); 17 Apr.-10 May (4 records), M.Arb (m.ob.).

#### **Brown Thrasher**

EA: 31 Mar. (3), Urbana (RC); 7 Apr., Chi (DM). MC: 30+, Urbana (RC); 15, Chi, 24 Apr. (EW). LD: 27 May, Chi (KH).

#### **American Pipit**

{1st wave} EA: 17 Mar. (3), Sang.L. (DB). MC: **56+**, Victoria area (Knox Co.), 3 Apr. (m.ob.); 50, s. Clinton Co, 26 Mar. (KM); 20, Spfld, 29 Mar. (DB). LD: 9 Apr., Chi (JPu); 9 Apr. (6), Winnebago Co (DW).

{2nd wave} EA: 26 Apr. (4), Sang.L. (DB); 26 Apr., Jackson Co (KM); 28 Apr. (3), Winnebago Co (DW). MC: 6, CBG, 14 May (LB). LD: 15 May, CBG (LB). Others: 6 May (3), CNC (KW); 8 May, Evanston (EW)

#### **Cedar Waxwing**

EA {1st wave}: 19 Jan., Spfld (DB); 8 Feb. (3), Thorn Creek Woods (Will Co) (JM). MC: **600**, Rockford, 20 Feb. (AB et al.); 200, UCCA, 12 Feb. (JD). LD: 9 Apr. (16), CBG (LB); 27 Mar. (6), Spfld (DB).

EA {2nd wave}: 30 Apr. (20), CONWR (KM); 6 May (12), near CNC (EW). MC: 445, JP, 28 May (HR). LD: 3 June (+), Evanston (EW); 6 June (18), Spfld (DB).

#### **Northern Shrike**

7 Mar., IBSP (GW).

#### **Loggerhead Shrike**

EA: 1 Apr., s.w. Spfld (DB); 3 Apr. (2), Winnebago Co (DW). LD: 29 Apr., JP (TBi).

#### **European Starling**

MC: 250, JP, 24 Apr. (HR).

#### **White-eyed Vireo**

EA: 8 Apr., Pomona (Jackson Co.) (KM); 24 Apr., Chi (KH, AS). MC: 13, Piatt Co, 8 May (RC). LD: **6 June**, Chi (RH, KH); 25 May, s.w. Cook Co (CT). Others: 2, JP, 12 May (SSu); 23-24 May, Evanston (EW).

#### **Bell's Vireo**

EA: 1 May, Pana (Christian Co) (MD, RP); 7 May (2), Spfld (DB); 16 May (2), n.e. Winnebago Co (DW).

#### **Solitary Vireo**

EA: **24 Apr. (2)**, JP (SSu, RH); 24 Apr. (2), Union Co (IF); 27 Apr., Urbana (RC). MC: 7, Spfld, 29 Apr. (DB). LD: 26 May, Spfld (DB); 22 May, Chi (KH).

#### **Yellow-throated Vireo**

EA: 14 Apr. (4), Jackson Co (KM); 25 Apr., Clinton (De Witt Co.) (MD); 28 Apr., CBG (LB); 28 Apr., JP (HR). MC: **12**, s.w. Will Co, 8 May (JM); 12, Clinton (De Witt Co.), 6 May (MD, RP). LD: 26 May, JP (SSu).

### Warbling Vireo

EA: 25 Apr., Spfld (DB); 30 Apr., CBG (LB). MC: 20, LCal, 8 May (WM, JL).

### Philadelphia Vireo

EA: 26 Apr., Union Co (TF, KM); 28 Apr., Urbana (RC); 8 May, Evanston. (EW). MC: 4, Spfld, 18-19 May (DB); 3, JP, 15 May (WS). LD: 5 June, Plum Creek F.P. (Cook Co) (SF); 3 June (2), Chi (RH); 4 June (2), Spfld (DB).

### Red-eyed Vireo

EA: 14 Apr., Pomona (Jackson Co.) (KM); 19 Apr., Spfld (DB); 26 Apr., JP (SSu). MC: 50, Piatt Co, 15 May (RC, EC). LD: 8 June, Urbana (RC).

### Blue-winged Warbler

EA: 14 Apr., Pomona (Jackson Co.) (KM); 24 Apr., Urbana (RC); 27 Apr., Chi (fide EW). MC: 15, Palos, 8 May (SF et al.); 4, CBG, 5 May (LB). LD: 3 June, Chi (KH); 14 May, Decatur (MD).

### Golden-winged Warbler

EA: 28 Apr., Urbana (RC); 4 May, Rockford (DW); 5 May, CBG (LB); 5 May, JP (SSu). MC: 11, Ryerson C.A., 8 May (DJ et al.); 8, Mason Co, 5 May (KR). LD: 25 May, JP (SSu); 21 May, RLCA (KR). "Brewster's Warbler": at CBG, Winfield & Skokie Lagoons (2) between 7-16 May; 5 June, JP (HR).

### Tennessee Warbler

EA: 24 Apr., Lodge Park (Piatt Co.) (RC); 2 May (4), Rockford (DW); 5 May, JP (SSu). MC: 77, Piatt Co, 8 May (RC); 71, e.c. Knox Co, 8 May (MB); 45, s. Clinton Co, 8 May (KM); 26, Palos, 14 May (WS). LD: 10 June, Chi (KH); 7 June, Wolf L (Cook Co) (WM); 1 June, Urbana (RC).

### Orange-crowned Warbler

EA: 16 Apr., Mason Co (KR); 24 Apr., Oak Park (Cook Co.) (RHe); 25 Apr. (2), JP (HR). MC: 13, JP, 7 May (SSu); 7, CBG, 30 Apr. (LB). LD: 19 May, Chi (KH).

### Nashville Warbler

EA: 14 Apr., Pomona (Jackson Co.) (KM); 19 Apr., Spfld (DB); 28 Apr. (3), CBG (LB). MC: 44, Macon Co, 8 May (RP); 28, JP, 4 May (SSu). LD: 26 May (2), JP (HR); 2 June (male), Spfld (DB).

### Northern Parula

EA: 8 Apr. (5), Pomona (Jackson Co.) (KM); 24 Apr., JP (SSu). MC: 20, Jackson Co, 14 Apr. (KM); 9, Piatt Co, 8 May (RC); 4, CBG, 15 May (LB). LD: 6 June, Chi (RH); 25 May, Spfld (DB).

### Yellow Warbler

EA: 14 Apr. (2), Jackson Co (KM); 20 Apr., Lockport (CA). MC: 45, COLSP, 8 May (LB); 31, LCal, 8 May (WM, JL). LD: 25 May, Sangamon Co (DB).

### Chestnut-sided Warbler

EA: 24 Apr., CBG (fide LB); 2 May, JP (HR). MC: 40+, CBG/Skokie Lagoons, 9 May (WS). LD: 13 June (2), Chi (RH, KH); 3 June, Urbana (RC).

### Magnolia Warbler

EA: 22 Apr., s. Clinton Co (KM); 28 Apr., JP (HR). MC: 60, Chi, 23 May (RH); 38, Macon Co, 8 May (RP); 28, JP, 20 May (SSu); 21, CBG, 10 May (LB). LD: 6 June, Chi (KH); 31 May, Spfld (DB).

### Cape May Warbler

EA: 29 Apr., Spfld (DB); 1 May, JP (SSu). MC: 40, JP, 7 May (SSu); 18, CBG, 10 May (LB). LD: 26 May (2), Chi (KH, SSu); 21 May, RLCA (KR). LD: 5 June, Chi (JL).

### Black-throated Blue Warbler

EA: 2 May, MS (WS); 5 May (2 males), Urbana (RC, m.ob.); 6 May, JP (SSu). MC: 9 (males), Skokie Lagoons, 9 May (WS). LD: 26 May, CBG (LB); 21 May, RLCA (KR). 34 reported in n.e. IL between 7-21 May (fide EW).

### Yellow-rumped Warbler

EA: 31 Mar., Sang L (DB); 3 Apr., M. Arb (fide EW); 4 Apr., Chicago (fide RB). MC: 245, JP, 28 Apr. (SSu). LD: 13 June, Chi (RH); 29 May, JP (HR); 26 May, Spfld (DB); 8 May (8), s. Clinton Co (KM).

### TOWNSEND'S WARBLER

6 May (ad. female), CBG (\*LB, JSt, m.ob.-ph.). See article in this issue.

### Black-throated Green Warbler

EA: 12 Apr., Pomona (Jackson Co.) (KM); 16 Apr., Flossmoor (MHa); 24 Apr., Skokie Lagoons (LB); 24 Apr., JP (SSu). MC: 25, Ryerson C.A., 8 May (DJ); 20, Piatt Co, 8 May (RC). LD: 6 June, Busse Woods (Cook Co) (SP); 6 June, Chi (KH); 3 June, Charleston (BH).

### Blackburnian Warbler

EA: 28 Apr., Pratts Wayne Woods (Du Page Co) (JP); 3 May, CBG (LB). MC: 18, CBG/Skokie Lagoons, 9 May (WS); 18, CBG, 16 May (LB); 18, Macon Co, 8 May (RP). LD: 5 June (1st summer male), Mason Co (KR); 1 June, Spfld (DB); 27 May, Fox Ridge S.P. (Coles Co) (BH et al.).

### Yellow-throated Warbler

EA: 30 Mar. (2), Pomona (Jackson Co.) (KM); 16 Apr., Flossmoor (Cook Co.) (MHa) - eating sunflower hearts; 16 Apr., Mason Co (KR); 18 Apr., M. Arb (fide RB). MC: 10, Pomona (Jackson Co.), 14 Apr. (KM). LD: 10 May, CBG (LB); 8 May (3), Macon Co (RP, m.ob.).

### Pine Warbler

EA: 27 Mar. (3), Pomona (Jackson Co.) (KM); 29 Mar., SRSF (KR); 24 Apr., Chi's I.I.T. Campus (fide RB); 24 Apr., (3), JP (SSu). LD: 10 May (2), JP (HR); 6 May, Urbana (RC).

### Prairie Warbler

EA: 14 Apr., Union Co (KM); 19 Apr., JP (GD, SDA); 28 Apr., Winnetka (Cook Co.) (LC). MC: 4, Jersey Co, 3 May (HW). LD: 13 May, Ryerson C.A. (Lake Co.) (SH); 10 May, JP (SSu); 8 May, Monticello (RC). Others: 28-29 Apr., Spfld (DB); 28 Apr. (2), Urbana (RW, RC); 2 May, Clinton (MD); 3 May, CBG (LB).

### Palm Warbler

EA: 14 Apr. (4), Union Co (KM); 21 Apr. (2), LCal (EW); 21 Apr., Lockport (CA). MC: 180, JP, 29 Apr. (SSu). LD: 27 May, Chi (KH).

### Bay-breasted Warbler

EA: 26 Apr., Union Co (KM, TF); 1 May, Urbana (RC); 7 May (7), Chi/JP (HR, KH). MC: 30+, CBG/Skokie Lagoons, 9 May (WS); 22, JP, 16 May (HR). LD: 31 May, Spfld (DB).



*Cerulean Warbler, 24 April 1993, Lincoln Park Bird Sanctuary, Cook County.  
Photo by Kanae Hirabayashi.*

#### **Blackpoll Warbler**

EA: 24 Apr., Chi (JO); 29 Apr. (3), Spfld (DB); 1 May, JP (SSu). MC: 49, Macon Co, 8 May (RP, m.ob.); 30, Clinton Co, 8 May (KM et al.); 13, JP, 9 May (HR). LD: 5 June, Chi (KH); 26 May, Urbana (RC). Good numbers.

#### **Cerulean Warbler**

EA: 14 Apr., Pomona (Jackson Co.) (KM); 24 Apr., Chi (KH, m.ob.). MC: 4, Winnebago Co, 8 May (DW); 3, JP, 7 May (SSu); 3, Kankakee River S.P. (Will Co.), 8 May (JM). LD: 24 May (male), Chi (CP); 21 May, RLCA (KR). Others: 6 seen in w. Du Page Co between 4-17 May (MS).

#### **Black-and-white Warbler**

EA: 21 Apr., Spfld (DB); 24 Apr. (3), Chi (HR, KH). MC: 14, JP, 9 May (HR). LD: 6 June, Chi (KH).

#### **American Redstart**

EA: 20 Apr., Union Co (KM); 27 Apr., Mason Co (KR); 28 Apr. Urbana (RC); 5 May, CBG (LB); 5 May, JP (HR). MC: 100, CBG, 17 May (KBU); 75, Chi, 23 May (RH). LD: 6 June, Chi (KH).

#### **Prothonotary Warbler**

EA: 14 Apr. (2), Pomona (KM); 24 Apr., JP (HR). MC: 15, RLCA, 21 May (KR); 8, Mason Co, 27 Apr. (KR). LD: 23 May, CBG (fide DJ). Others: 30 Apr.-8 May (**20 records**), n.e. IL (m.ob.) - a record.

#### **Worm-eating Warbler**

EA: 14 Apr., Jackson Co (KM); **19 Apr.**, JP (GD, SDa); 21 Apr., Urbana (RC); 21 Apr., Spfld (DB); 28 Apr., CBG (LB); 28 Apr., Chi (EL). MC: 3, Spfld, 3 May (DB). LD: **27 May**, Chi (McCormick Place) (DM); 22 May, JP (HR). Others: 2 May (2), e. Knox Co (MB); 8 May, IBSP (DD); 17 reported from n.e. IL (record numbers).

#### **Ovenbird**

EA: 23 Apr., Mason Co (KR); 24 Apr., Chi (EW). MC: 22, Chi, 5 May (EW, m.ob.). LD: 9 June, Chi (KH) - 5 present on 4 June there (AA).

#### **Northern Waterthrush**

EA: 20 Apr., Spfld (DB); 22 Apr. (2), Evanston (EW). MC: 13, Chi, 15 May (WS); 12, Urbana, 28 Apr. (RC). LD: 1 June, Chi (KH); 23 May, Spfld (DB).

#### **Louisiana Waterthrush**

EA: 30 Mar. (7), Jackson Co (KM); 2 Apr., Spfld (DB); 4 Apr., e. Knox Co (MB); 10 Apr. (2), JP (DA). MC: 5, Mason Co, 12 Apr. (KR). LD: 22 May, KCP (RC); 21 May, JP (SSu).

#### **Kentucky Warbler**

EA: 17 Apr., Johnson Co (RP); 23 Apr., Mason Co (KR); 25 Apr., Urbana (RC); 8 May, Wauk (JN). MC: 9, Mason Co, 14 May (KR, MB); 2, CBG, 10 May (LB). LD: **7 June**, Chi (Hyde Park) (DM). Others: 11 May, Ryerson C.A. (SH); 9-23 May (5 records), JP (m.ob.); 8-24 May (7 records), CBG/Skokie Lagoons (m.ob.). 20 n.e. IL records.

#### **Connecticut Warbler**

EA: **5 May**, Urbana (DR, m.ob.); **8 May** (female), Ryerson C.A. (\*DJ); 9 May, Skokie Lagoons (CA); 9 May (2), JP (AS, JL, HR). MC: 8, West Du Page Woods, 16 May (MS, DK); 4, RLCA, 21 May (KR). LD: 7 June (2), JP (KC fide HR); 25 May, e. Knox Co (MB).

#### **Mourning Warbler**

EA: 2 May, SRSF (KR); 7 May, JP (HR); 8 May, Skokie Lagoons (JP). MC: 14, Chi, 23 May (RH); 10, RLCA, 21 May (KR); 9, CBG, 26 May (LB); 5, Urbana, 23 May (RC). LD: 8 June, Chi (KH); 5 June, Mason Co (KR).

#### **Common Yellowthroat**

EA: 15 Apr., JP (SSu); 23 Apr., Chi (KH). MC: 50, COLSP, 8 May (LB). LD: 6 June, Chi (KH).

#### **Hooded Warbler**

EA: 20 Apr., Spfld (DB); 28 Apr. (2), Chi (KH, EL). MC: 5, Mason Co, 5-6 May (KR); 2, JP, 7-8 May (HR). LD: 1 June, e. Knox Co (MB); 27 May, Chi (CP). 30+ reports from n.e. IL.

#### **Wilson's Warbler**

EA: 24 Apr., JP (SSu); 5 May, CBG (LB). MC: **45**, Chi, 23 May (RH); 23, CBG, 15 May (LB); 8, RLCA, 21 May (KR). LD: 8 June, Chi (KH); 26 May, Spfld (DB).

#### **Canada Warbler**

EA: 2 May, Naperville (JP); 5 May, Chi (fide EW). MC: **25**, Chi, 23 May (RH); 12, Urbana, 16 May (RC). LD: 10 June, Swallow Cliff F.P. (Cook Co) (WM, WS, SF); 6 June, Chi (KH); 1 June, Spfld (DB).

#### **Yellow-breasted Chat**

EA: 14 Apr., Oakwood Bottoms (KM); 23 Apr., Mason Co (KR); **24 Apr.**, Chi (EW, m.ob.); 25 Apr., Urbana (RC). LD: 21 May, JP (SSu).

#### **Scarlet Tanager**

EA: 18 Apr., L Murphysboro (DMi); **24 Apr.**, CBG (AA); 26 Apr., Spfld (DB). MC: 14, Oak Park, 8 May (SL); 7, Urbana, 7 May (RC). LD: 1 June (female), Spfld (DB); 26 May (3), Chi (SSu, KH).

### Summer Tanager

EA: 14-21 Apr., Goodenow Grove F.P. (Will Co) (MHa, m.ob.-ph.). MC: 5, Mason Co, 10 May (KR); 2, Chi (LaBaugh Woods), 8 May (DBr). LD: 24 May, Spfld (DB); 24 May (molting male), Evanston (EW). Others: 2 May (male), Palos (Joe's Pond) (JL); 3 May (male), CBG (JSt); 5 May (molting male), JP (EW, m.ob.); 21 May (male), CNC (JB). At least 8 n.e. IL records.

### Northern Cardinal

MC: 43, Spfld, 29 Apr. (DB).

### Rose-breasted Grosbeak

EA: 24 Apr., Oak Park (RHe); 26 Apr., Lane (RP); 28 Apr., M.Arb (m.ob.). MC: 32, Piatt Co, 8 May (RC); 16, Chi, 5 May (EW). LD: 29 May (3), Chi (SSu, KH).

### Blue Grosbeak

EA: 19 Apr., Carl.L (MSe); 5 May, Mason Co (KR); 8 May (male), w. Will Co (JM). LD: 27 May- 5 June, Waterfall Glen F.P. (1st Du Page Co. record) (male) (DDe et al.). Others: 14 May (male), Mason Co (MB, KR); 15 May (male), s. of Spfld (DB).

### Indigo Bunting

EA: 14 Apr. (3), Union Co (KM); 28 Apr. (8), Urbana (RC); 2 May, M.Arb (DRi). MC: 70, Piatt Co, 8 May (RC). LD: 5 June, Chi (KH).

### PAINTED BUNTING

20-22 Apr. (ad. male), Makanda (at feeder) (BMi, AM, m.ob.-photos). 1st confirmed Illinois record.

### Dickcissel

EA: 17 Apr., Reavis Prairie (Mason Co) (KR); 28 Apr. (2), e. Knox Co (MB); 28 Apr. (4), Sang.L (DB). MC: 72, e.c. Knox Co, 8 May (MB); 10, n. Kane Co, 25 May (JM). LD: 8 June, Chi (RH); 7 June, CBG (JSt). Others: wintering male present to 25 Apr., Athens (VK).

### Rufous-sided Towhee

EA: 18 Mar., Urbana (RC); 2 Apr., Chi (JB). MC: 18, JP, 2 May (HR). LD: 18 May, Chi (KH).

### American Tree Sparrow

EA: 26 Mar., Chi (KH). LD: 28 Apr. (5), JP (HR).

### Chipping Sparrow

EA: 30 Mar., e. Knox Co (MB); 7 Apr., JP (DM); 8 Apr., Glencoe (LB). MC: 22, Jackson Co, 14 Apr. (KM); 18, JP, 7 May (HR); 18, Spfld, 5 May (DB).

### Clay-colored Sparrow

EA: 17 Apr., Evanston (backyard) (RCa); 20 Apr., Chi (Olive Park) (CP, GW); 28 Apr., Chi (CP). MC: 3, Rockton, 8 May (DW). LD: 22 May (2), Chi (LB). Others: 24 Apr.-1 May (male), Urbana (RC); 5 May (2), JP (HR); 5 May (2), CBG (LB).

### Field Sparrow

EA: 6 Mar., Pomona (Jackson Co.) (KM); 22 Mar., Buckhart (Sangamon Co.) (DB); 7 Apr. (3), Chi (DM, m.ob.). MC: 32, Chi, 24 Apr. (EW); 32, Jackson Co, 14 Apr. (KM). LD: 26 May, Chi (KH).

### Vesper Sparrow

EA: 28 Mar., Rantoul (RC); 4 Apr., Fermi (PK); 5 Apr., CBG



*Male Summer Tanager, 21 April 1993, Plum Creek Nature Center, Will County. This very early male had been present since 14 April.  
Photo by Joe B. Milosevich.*

(LB). MC: 15, LCal, 18 Apr. (DM, JO, CP); 12, Clin.L, 3 Apr. (RP).

### Lark Sparrow

EA: 9 Apr., Mason Co (KR); 28 Apr. (2 males), Braidwood (JM). MC: 4, Spfld, 1 May (DB). Others: 28 Apr., Urbana (RC); 1 May, Union Co (RP); 6 May, De Witt Co (RP); 13 May, Shelby Co (RP).

### Savannah Sparrow

EA: 6 Mar., UCCA (KM); 28 Mar., LCal (DM, WS); 30 Mar., M.Arb (fide EW). LD: 31 May, Chi (KH); 25 May, Sang.L (DB). Low numbers throughout.

### Grasshopper Sparrow

EA: 10 Apr., Urbana (RC); 21 Apr., Chi (EL, KH). MC: 7, Spfld, 4 May (DB); 6, Clinton Co, 8 May (KM). LD: 23 May, Chi (KH).

### Henslow's Sparrow

EA: 19 Apr., Chi (EL, KH). MC: 2, JP, 2 May (SF); 2, Iroquois Co C.A., 2 May (WM). LD: 8 May, Evanston (EW). Others: 30 Apr., Mason Co (KR).

### Le Conte's Sparrow

EA: 4 Apr., s.e. Spfld (DB); 7 Apr., Chi (DM). MC: 3, JP, 24 Apr. (RH). LD: 8 May, JP (fide HR); 1 May, Spfld (DB). Others: 16, 23 & 28 Apr. (2), Chi (RHe, KH & CP, EL).

### Sharp-tailed Sparrow

EA: 23 May, Chi (RH). LD: 27 May, Chi (DM). Fairly short migratory season.

### Fox Sparrow

EA: 6 Mar., Pomona (KM); 12 Mar., Urbana (RC); 24 Mar., JP (KC). MC: 24, JP, 15 Apr. (SSu). LD: 7 May, Chi (DM); 4 May, Calumus L (Macon Co) (RP).

### Song Sparrow

EA: 14 Mar., M.Arb (m.ob.).

### Lincoln's Sparrow

EA: 14 Apr., Jackson Co (KM); 19 Apr., Spfld (DB); 21 Apr.,

Goodnow Grove F.P. (Will Co) (JM); 24 Apr. (5), Chi (EW, m.ob.). MC: 20, Chi, 23 May (RH); 9, Chi, 5 May (EW). LD: 31 May-5 June, Chi (IL, KH, m.ob.); 29 May, JP (SSu).

#### Swamp Sparrow

EA: 6 Mar., Oakwood Bottoms (Jackson Co.) (KM); 31 Mar. (13), Sangamon Co (DB); 3 Apr., JP (KC). MC: 117, Chi, 24 Apr. (EW); 45, CBG, 28 Apr. (LB). LD: 29 May, Chi (KH); 19 May, n.w. Spfld (DB). Others: 14 Mar., Chi (KH) — also seen in late winter at same location.

#### White-throated Sparrow

EA: 10 Apr. (6), JP (HR). MC: 800+, Urbana, 28 Apr. (RC); 340+, Chi, 24 Apr. (EW); 325, JP, 28 Apr. (SSu). LD: 1 June, Spfld (DB); 31 May, Chi (KH).

#### White-crowned Sparrow

EA: 1 Apr., (15), Union Co (KM); 17 Apr., JP (HR); 17 Apr., Urbana (RC); 25 Apr., CBG (LB). MC: 46, Chi, 5 May (EW); 45, JP, 7 May (HR). LD: 31 May, Chi (KH); 23 May, Table Grove (fide KM); 2 June, Spfld (DB).

#### Harris' Sparrow

EA: 28 Apr. (singing male), near Spoon L (Knox Co) (MB); 29 Apr.-1 May, Byron (Ogle Co) (DW). LD: 15 May, Chi (WS, JM).

#### Dark-eyed Junco

LD: 14 May, Chi (Sanctuary) (JPu, KH); 8 May, Du Page Co (fide EW); 6 May, De Witt Co (RP).

#### CHESTNUT-COLLARED

##### LONGSPUR

17-18 Apr. (female), LCal (DM, \*JO, CP).

#### Lapland Longspur

MC: 600, Winnebago Co, 21 Feb. (DW); 500, Victoria area, 2 Apr. (MB); 300, Clin.L, 13 Mar. (RP); 150, De Kalb Co, 22 Feb. (DS). LD: 8 May, IBSP (DD). Others: 40, LCal, 6 Mar. & 18 Apr., resp. (DM et al.).

#### Smith's Longspur

EA: 6 Mar. (5), LChau (KR). MC: 20, near Victoria (Knox Co.), 3 Apr. (MB). LD: 29 Apr., Berry (Sangamon Co.) (DB). Others: 15, Arcola (Douglas Co.), 11 Apr. (RC).

#### Snow Bunting

EA: 21 Feb. (7), Rockford (DW). MC: 10, LCal, 6 Mar. (DM). LD: 27 Mar. (3), Chi (fide EW); 27 Mar. (2), CBG (DJ).

#### Bobolink

EA: 23 Apr., Spoon L (Knox Co) (MB); 28 Apr., JP (SSu); 29 Apr., Evanston (EW). MC: 25, Reavis Prairie (Mason Co), 8 May (KR et al.); 16, Joliet Arsenal, 8 May (JM). LD: 21 May (3), s. Clinton Co (KM). Few reported this spring.

#### Red-winged Blackbird

EA: 1 Mar., Chi (KH). MC: 14,000 (mainly winter roost), LCal, 7 Mar. (WM); 10,000, Clin.L, 27 Mar. (RP).

#### Eastern Meadowlark

EA: 22 Jan., Spfld (DB); 24 Mar. (2), JP (KC). MC: 30, Spfld,

20 Mar. (DB); 9, CBG, 29 Mar. (LB). LD: 25 Apr., Chi (KH).

#### Western Meadowlark

EA: 19 Mar. (3), Monroe Co (KM); 23 Mar., s.w. Spfld (DB); 27 Mar. (3), Winnebago Co (DW); 5 Apr., CBG (LB). LD: 9 May (male), LCal (RC); 8 May, s.w. Spfld (DB). Others: 21 Mar. (3), Alexander Co (TF, JD); 21 Mar. (2), Pulaski Co (TF, JD); 18 Apr., Jackson Co (TF); 8 May (2), IBSP (DD); 8 May, McDonald Woods F.P. (Lake Co) (AS).

#### Yellow-headed Blackbird

EA: 30 Mar. (female), Jacksonville (fide DB); 10 Apr., Rockford (DW); 18 Apr. (2), McHenry Dam (BM); 18 Apr. (male), CBG (LB); 18 Apr. (4 males), LCal (WM). MC: 14 (5 females), LCal, 8 May (WM, JL). LD: 14 May (male), CBG (LB). Others: 28 Apr. (male) & 12 May (female), Joliet (JM); 5 May (female), Sang.L. (DB); 10 & 12 May, CBG (LB) — different females.

#### Rusty Blackbird

EA: 20 Feb. (4), LCal (WM). MC: 500, Urbana, 28 Mar. (RC); 150, UCCA, 4 Apr. (KM); 50, Clin.L, 10 Apr. (MD, RP); 37, West Chicago, 11 Mar. (MS); 18, Grayslake, 28 Mar. (DJ). LD: 3 May, Evanston (EW); 25 Apr., Urbana (RC, EC). Others: 8, Tinley Park, 5 Apr. (WS).

#### Brewer's Blackbird

EA: 9 Mar. (female), Urbana (RC); 26 Mar. (4), MS (WS). MC: 35, Havana, 2 Apr. (KR); 27, Sangamon Co, 23 Mar. (DB); 7, Rockford, 2 Apr. (DW). LD: 8 May (male), Wauk (JN). Others: 12 Mar.-4 Apr. (5 reports), Urbana (RC); 30 Mar., M.Arb (fide EW); 5 Apr. (2 males), Douglas-Hart N.P. (BH et al.) — 1st Coles Co. record in 26 years.

#### Common Grackle

EA: 28 Feb. (200), Urbana (RC); 7 Mar., Glencoe (LB). MC: 20,000, Urbana, 17 Mar. (RC); 400, JP, 10 Apr. (SSu).

#### Brown-headed Cowbird

EA: 6 Mar. (20), Mason Co (RP); 26 Mar. (2), Evanston (EW); 26 Mar. (6), JP (HR). MC: 10,000, Clin.L, 27 Mar. (RC). Others: 47 (flock), Evanston, 30 Mar. (EW)

#### Orchard Oriole

EA: 19 Apr., Jackson Co (KM); 28 Apr., JP (JO); 2 May (2), CBG (LB). MC: 14, s.w. WillCo, 8 May (JM). LD: 8 June, Chi (RH); 27 May, Chi (KH).

#### Northern Oriole

EA: 20 Apr., CONWR (KM); 25 Apr., s. of Spfld (DB); 28 Apr., JP (HR). MC: 28, s.w. WillCo, 8 May (JM).

#### Purple Finch

EA: 7 Apr., Spfld (DB); 8 Apr., Urbana (RC). MC: 6, Pomona (Jackson Co.), 8 Apr., (KM). Others: 19 Apr., West Du Page Woods (MS); 22 Apr., Evanston (EW); 24 Apr., s.e. Cook co (WM); 28 Apr. (2), West Chicago (MS); 28 Apr., Spfld (DB); 30 Apr. (2), JP (HR). Numbers decreasing?

#### House Finch

EA: 1 Mar., Chi (KH). MC: 50, Clin.L, 10 Apr. (RP). Others: flocks totaling 42 still migrating on Evanston lakefront, 8 May (EW).



*Sharp-tailed Sparrow, April 1993,  
Magic Hedge, Cook County.  
Photo by Ken Oberlander.*

**Red Crossbill**

LD: 20 Mar. (20), SRSF (KR); 6 Mar. (3), Clin.L (RC).

**Pine Siskin**

MC: 10, Spfld, 13 Apr., (DB); 10, M.Arb, 27 Mar. (m.ob.). LD: 3 June, Chi (RH); 26 May, JP (SF). Others: 3 May (2), Clin.L (RP); 7 May, Johnson Co (TF); 9 May (2), Rockford (DW); 14-16 May (2), West Chicago (MS). Very scarce this spring.

**American Goldfinch**

MC: 95, LCal, 8 May (WM, JL).

**Eurasian Tree Sparrow**

MC: 50, Madison Co, 3 Mar. (KM); 10, Spfld, 3 Apr. (DB). Others: 8 May, Piatt Co (\*GDa et al.) - apparently present prior to this. About 50 miles n.w. from known breeding area.

**Exotics: Black Swan:** 10-14 Mar. (pr.), Homer L (RC).

**Addendum:**

1992 unpublished Spring records.

Osprey: ; 9 June 1992, Charleston (BH).

Black-bellied Plover: 9 June 1992, Arcola (Douglas Co.) (BH).

Pectoral Sandpiper: 9 June 1992, Arcola (Douglas Co.) (BH).

Black Tern: 6-9 June 1992, Arcola (Douglas Co.) (BH, RC).

Bay-breasted Warbler: 7 June 1992, Charleston (BH).

White-throated Sparrow: 4 & 8 June 1992 (at feeder), Charleston (BH).

**Corrigenda:**

**Lark Bunting:** Vol 2: 64, Seasonal Highlights, second to the last paragraph — date should read 31 August (not 1 August). Vol 2: 78, there were only 3 Cook Co. records of Lark Bunting during the Fall 1992 season.

**Lesser Black-backed Gull:** Vol 1: 112, Evanston record should read 2nd winter (not 1st winter).

---

The Illinois Ornithological Society gratefully acknowledges the following members for their generous donations and support.

**Sponsor \$500**

Muriel Smith

**Supporters \$100 - \$499**

Chicago Ornithological Society

Dinah Dyer and Herb Wisch

Parker Hall

Mary Anne Harrison

David B. Johnson

R. David Johnson

Sebastian Patti

Karen Rodemaker

Michael Sweeney

Dr. George H. Waring

Dr. David Willard

**Contributors \$50 - \$99**

Dr. John Bergstrom

David Brenner

Florence Burek

Beth Chato

Betsy Fikejs

Erica and Hartmann Friederici

Heller Nature Center

Steve Hossler

Mr. and Mrs. Joseph Jobst

R. Laegeler

Lake Forest Open Lands

Association

Francis Lenski

Dr. and Mrs. David B. Littman

Navarre and Marjorie Macomb

North Central Illinois Ornithological Society

Joseph Jr. and Marlene Nowak

Wilbur and Baiba Rosenkranz

Jack and Midge Saunders

Mark Seiffert

John E. and Caryl M. Sweeney

Anton Szabados

The Upstart Crow

Mr. and Mrs. William Walters

Wild Birds Unlimited/Highland Park

---

**DIMENSIONS INSURANCE AGENCY**

For those who need health & life coverage  
(Specializing in group & individual plans, medicare)

**ERIC WALTERS**

720 Reba Place  
Evanston, IL 60202  
708-864-5095

**Springhouse**, begins where the  
travel brochures leave off.

Read about the real Southern Illinois:  
History, folklore, humor, recipes, and letters—  
always plenty of letters.

**One-year subscription (6 issues) \$15.00**

**Springhouse**

P.O. Box 61  
Herod, IL 62947  
Tel. No. (618) 252-3341





*This index includes the names of all bird species mentioned in articles in Volume 2, with the exception of the Field Notes in which bird species are listed in taxonomic order and therefore can easily be accessed. All articles are listed under author's last name. Issue Number 1 is pages 1-40; Number 2, pages 41-80; Number 3, pages 81-120; Number 4, pages 121-160. Index compiled by Sheryl De Vore.*

- Benjamin, Irene, Yellow Rail at Montrose Harbor, 138 - 139.
- Binford, Laurence, C., The Chicago Botanic Garden: Bird Finding Guide, 131 - 134.
- Binford, Laurence, C., First Illinois Record of MacGillivray's Warbler, with a Summary of Eastern North American Records and Notes on Identification.
- Binford, Laurence C., First Illinois Record of the Sandwich Tern, 13, 14.
- Bittern, American, 54,125.
- Blackbird, Red-winged, 5,8,122.  
Yellow-headed, 136, 137.
- Bluebird, Eastern, 16,97.
- Bobolink, 5,6,8,9,10,122,132.
- Bobwhite, Northern, 122,125.
- Bohlen, H. David, Cape May Warbler Holds Territory During Fall Migration, 53.
- Bohlen, H. David, First Illinois Record of the Arctic Tern, 12.
- Bohlen, H. David, Solitary Vireo in Early Winter at Springfield, 103.
- Bohlen, H. David, Vermilion Flycatcher at Sangchris State Park, 63.
- Branhagen, Alan, Bohemian Waxwing in Winnebago County, 102,103.
- Brant, 100.
- Bufflehead, 51.
- Bunting, Lark, 38,64.  
Painted, 99, 127, 128.
- Canvasback, 133.
- Cardinal, Northern, 57.
- Chapel, Robert, 1992 Fall Migration, 65 - 80.
- Chapel, Robert, Race Street Flyway, 54 - 56.
- Chat, Yellow-breasted, 10.
- Chicken, Greater-Prairie, 122 - 126.
- Chickadee, Black-capped, 57, 63,103.  
Boreal, 104.  
Carolina, 99.
- Chuck-will's-widow, 17,18,55.
- Clark, Charles T., Excerpts from the Field Notes of Charles T. Clark, 36 - 39.
- Cohen, Hal, Bald Eagles, Distinguishing from Other Raptors and Determining Age, 92 - 94.
- Common Yellowthroat, 6,8,54.
- Condor, California, 92.
- Coot, American, 46,54.
- Cormorant, Neotropical, 20,21.
- Cowbird, 57.
- Crane, Sandhill, 55,132,133.
- Crossbill, Red, 99,134.  
White-winged, 134.
- Crow, Fish, 15.
- Cuckoo, Black-billed, 46,97.  
Yellow-billed, 46.
- Danley, Robert, Rock Wren Winters at Crab Orchard NWR, 101.
- Danley, Robert, 1992-93 Winter Field Notes, 105 - 118.
- DeNeal, Judy K., Curved-billed Thrasher: First Illinois Record, 87 - 89.
- DeNeal, Judy K., Helpers at Nest, 16.
- DeNeal, Judy K., Jefferson County's First Black-necked Stilt, 62.
- DeNeal, Judy K., The Greater Prairie-Chicken in Illinois, 122 - 126.
- DeSante, David F., First Illinois Record of MacGillivray's Warbler With a Summary of Eastern North American Records and Notes on Identification, 47 - 50.
- De Vore, Sheryl, The Bald Eagle in Illinois, 82 - 86.
- Dickcissel, 5,6,8.
- Dove, Mourning, 19, 132.
- Dove, Ringed Turtle, 19.
- Dovekie, 51,52.
- Duck, Fulvous Whistling, 38.  
Ruddy, 133.  
Wood, 39,87,134.
- Eagle, Bald, 55,82,83,84,85,86,90,91,92,93,94.  
Golden, 92,93
- Eastern Wood-Pewee, 2.
- Egret, Cattle, 37.  
Great, 60,138.  
Snowy, 37.
- Falcon, Peregrine, 42,43,44,45,46,55,132.  
Prairie, 54,55.
- Finch, House, 38,57.  
Purple, 38.
- Fink, Todd, Curve-billed Thrasher: First Illinois Record, 87 - 89.
- Fink, Todd, Glossy Ibis in Pulaski County, 138.
- Flicker, Northern, 132.
- Flycatcher, Acadian, 4,21.  
Alder, 22,54.  
Great-crested, 10.  
Olive-sided, 55.  
Scissor-tailed, 131.  
Willow, 10,54,134.  
Vermilion, 63, 131.
- Friederici, P., Declining Neotropical Migrants, 2 - 4.
- Friscia, Sue, Backyard Rarities, 99.
- Friscia, Sue, Homemade Feeders, 135.
- Friscia, Sue, Ringed Turtle Doves at Illinois Feeders, 19.
- Friscia, Sue, Suet: Instant Energy, 57.
- Gadwall, 97.
- Gelman, Ben, Painted Bunting: First Confirmed State Record, 127 - 128.
- Goldfinch, American, 6,8,57,103.  
European, 37.
- Goose, Blue, 100.  
Canada, 100,133.  
Ross', 87,100.  
Snow, 100.  
White-fronted, 87,100.
- Goshawk, Northern, 9, 97.
- Grackle, Common, 57.
- Grebe, Clark's, 60.  
Eared, 133.  
Horned, 52,82,101.  
Pied-billed, 46.  
Western, 60.
- Grosbeak, Blue, 99, 127, 128.  
Rose-breasted, 97,136,137.
- Gull, Black-headed, 104.  
Bonaparte's, 13,14,52,96,104.  
California, 62.  
Great Black-backed, 139.  
Herring, 52.  
Mew, 100, 101.  
Ring-billed, 101,140.  
Slaty-backed, 104.
- Gyr Falcon, 52.
- Harrier, Northern, 96,125.
- Haverstock, Ann, Grassland Opera, 9 - 11.
- Hawk, Broad-winged, 61,97,132.  
Cooper's, 132.  
Red-tailed, 97.  
Red-shouldered, 97.  
Sharp-shinned, 132.  
Swainson's, 37,55.
- Hennen, Mary, The Status of the Chicago Peregrine Release and Restoration Project, 42 - 46.
- Herkert, James R., The Influence of Two Centuries of Habitat Change on Grassland Bird Populations in Illinois, 4 - 8.
- Heron, Black-crowned Night, 134.  
Great Blue, 60,96,132, 138.  
Green-backed, 96,132.  
Little Blue, 37,138.
- Horned Lark, 5,8.
- Hughes, Robert, Distinguishing Illinois Nighthjars, 17,18.
- Hughes, Robert, California Gull in Cook County, 62 - 63.
- Hughes, Mew Gull in Chicago, 100.
- Hummingbird, Ruby-throated, 99.
- Ibis, Glossy, 138.  
White-faced, 138.
- Jaeger, Parasitic, 38.
- Jay, Blue, 3, 132.
- Johnson, David B., Mew Gull in Waukegan, 100-101.

- Johnson, Wib, Swainson's Thrush on Evanston North Shore CBC, 101,102.
- Killdeer, 87,132.
- Kingfisher, Belted, 96,132.
- Kinglet, Golden-crowned, 103.
- Kittiwake, Black-legged, 139, 140.
- Kleen, Vernon M., 1992 Breeding Season, 23 - 40.
- Kleen, Vernon M., First Fish Crow Nest in Illinois.
- Kleen, Vernon M., Five Species of Geese on 1992 Union County CBC, 100.
- Longspur, Chestnut-collared, 140,141.
- Lapland, 55,140,141.
- Smith's, 55.
- Loon, Common, 52,87.
- Magney, Reid, Bald Eagles in Winter: Bird Finding Guide, 90 - 91.
- Mallard, 39.
- McKee, John, Dovekie: First Illinois Record, 51,52.
- Meadowlark, Eastern, 8,122.
- Western, 20.
- Merlin, 55.
- Melrose, Terri, Bald Eagles in Winter: Bird Finding Guide, 90 - 91.
- Milde, Margo, Alder Flycatchers at Volo Bog and Spring Lake Nature Preserve, 22.
- Milosevich, Joe, Illinois' Second Arctic Tern, 140.
- Milosevich, Joe, Neotropic Cormorant at Lake Renwick, 21.
- Milosevich, Joe, Nesting Acadian Flycatchers in Joliet, 21,22.
- Milosevich, Joe, Wood Stork at Sanganois Conservation Area, 60 - 61.
- Mockingbird, Northern, 16,55.
- Moskoff, William, Birding Lake Forest's Open Lands, 96 - 98.
- Murrelet, Ancient, 51.
- Neal, Jim, Late-departing Immature Black-legged Kittiwake, 139-140. Nighthawk, Common, 17,18,132.
- Nuthatch, Red-breasted, 22,55.
- O'Brien, John, Chestnut-collared Longspur at Lake Calumet, 140-141.
- O'Brien, John, Neotropic Cormorant at Crabtree and Palatine Marsh
- Oehmke, Dennis, Cape May Warbler Holds Territory During Fall Migration, 53.
- Oriole, Northern, 132.
- Orchard, 134.
- Osprey, 92,132.
- Ovenbird, 2.
- Owl, Barred, 55.
- Eastern Screech, 104.
- Great-horned, 10,42,97,132.
- Short-eared, 9,125,132.
- Snowy, 119.
- Palmer, Richard, Northern Parula Warbler: Second Winter Record for Illinois, 103,104.
- Parakeet, Monk, 46.
- Pelican, American White, 131.
- Pheasant, Ring-necked, 124.
- Pigeon, 42.
- Plover, Lesser Golden, 59.
- Prairie-chicken, Greater, 5,122,123,124,125, 126.
- Rail, Black, 139.
- King, 131.
- Virginia, 54.
- Yellow, 125,138,139.
- Redhead, 133.
- Redpoll, 55,133.
- Restart, American 2.
- Richmond, Kevin, Kirtland's Warbler at Chautauqua NWR, 63.
- Robin, American, 57,101,134.
- Rosenband, Gerald, Red-breasted Nuthatches Feed Young at Illinois Beach State Park, 22.
- Sandpiper, Purple, 39.
- Sharp-tailed, 39.
- Solitary, 96.
- Upland, 5,6,8,9,125,132.
- White-rumped, 59.
- Sapsucker, Yellow-bellied, 53.
- Schwegman, John, First Fish Crow Nest in Illinois, 15.
- Shrike, Loggerhead, 55.
- Northern, 99,119,125.
- Siegle, Allen H., 14,000 Broad-winged Hawks in Lake County, 61 - 62.
- Siskin, Pine, 55,134.
- Snipe, Common, 21,132.
- Solitaire, Townsend's, 104.
- Sparrow, American Tree, 97.
- Black-throated, 36.
- Chipping, 57,97.
- Clay-colored, 55.
- Field, 6,8,97,122.
- Fox, 97.
- Grasshopper, 6,8,9,122,125.
- Harris', 9,55,132.
- Henslow's, 5,7,8,125.
- House, 57.
- Lark, 10.
- LeConte's, 54.
- Lincoln's, 97.
- Song, 6,8,97,101,122,132.
- Swamp, 132.
- Vesper, 5,6,8,10.
- White-crowned, 97.
- White-throated, 101, 136, 137.
- Starling, 42.
- Steffen, James, Nesting Common Snipe at Wadsworth Prairie, 21.
- Steffen, James, Townsend's Warbler at Chicago Botanic Garden, 129 - 131.
- Stilt, Black-necked, 38,62.
- Stork, Wood, 60.
- Swallow, Bank, 134.
- Cliff, 134.
- Tree, 87.
- Swift, Black, 36.
- Chimney, 36, 46.
- Tanager, Scarlet, 4,10, 132.
- Teal, Blue-winged, 97.
- Tern, Arctic, 12,13,140.
- Caspian, 13.
- Cayenne, 14.
- Forster's, 13.
- Large-billed, 36.
- Sandwich, 13,14.
- Thrasher, Bendire's, 88.
- Curve-billed, 87,88,89.
- Thrush, Gray-cheeked, 97.
- Hermit, 54,97.
- Swainson's, 97,101,102.
- Wood, 2,3,4,97.
- Titmouse, Tufted, 10,16.
- Towhee, Rufous-sided, 10,97.
- Turnstone, Ruddy, 59.
- Veery, 97.
- Verstraete, Christine A., Christmas Bird Counts: For The Birds?, 119.
- Vireo, Bell's, 10.
- Philadelphia, 53.
- Solitary, 54,103.
- Warbling, 97.
- White-eyed, 4,10,56.
- Vulture, Turkey, 92.
- Walters, Eric, Avian Annals, 104,126.
- Walters, Eric, 1993 Spring Migration Field Notes, 142 - 158.
- Walters, Eric, Western Grebe at Wilmette/Evanston, 60.
- Warbler, Black-throated Blue, 55.
- Black-throated Green, 129, 130.
- Cape May, 53, 131.
- Connecticut, 47,55,96.
- Golden-cheeked, 131.
- Hermit, 131.
- Hooded, 2,4,56.
- Kentucky, 4.
- Kirtland's, 63,64.
- MacGillivray's, 47,48,49,50.
- Magnolia, 63,64.
- Mourning, 47,48,49,50,96.
- Myrtle, 53.
- Northern Parula, 103,104.
- Orange-crowned, 103.
- Palm, 129.
- Pine, 99.
- Prairie, 64,132.
- Worm-eating, 56.
- Tennessee, 53.
- Townsend's, 129, 130, 131.
- Yellow, 54, 129.
- Yellow-rumped, 53,54,64,101,103,129.
- Waxwing, Bohemian, 102,103,134.
- Cedar, 97,101,103,134.
- Westcott, Chuck, Glossy Ibis at Crabtree Nature Center, 138.
- Whimbrel, 59.
- Whippoorwill, 10,17,18,55.
- Willard, David, Lark Bunting in Cook County, 64.
- Woodcock, American, 54, 96.
- Woodpecker, Downy, 103.
- Pileated, 99.
- Wren, Carolina, 16,97.
- House, 16,97,99.
- Marsh, 87,96.
- Rock, 101.
- Sedge, 8,10.
- Yellowlegs, Lesser, 132.
- Yellowthroat, Common, 97.

---

## SUBMISSION INFORMATION

---



★ We welcome manuscripts, photographs, and illustrations for possible publication in *Meadowlark*.

★ Article topics include unusual bird sightings and nesting accounts, technical papers on bird research, and other articles such as bird finding guides and field identification tips. Joy of birding articles will also be considered.

★ Manuscripts should be typewritten or computer-generated, double spaced and on only one side of numbered pages. Please send two copies of your manuscript and make sure you keep another for your records.

★ If you are able, submit a computer disc in ascii file or for Word Perfect 5.1.

★ Include name, address, and day and night time phone numbers. Other pertinent information about your qualifications and background is also helpful.

★ We prefer clear black and white or color print photographs. Color slides may also be acceptable.

★ We reserve the right to review and edit articles according to style, grammar, accuracy, and readability.

✦ Send articles, photographs, and inquiries to:

Sheryl De Vore Chief Editor  
967 Braeburn Road  
Mundelein, IL 60060.

✦ Pen and ink drawings are also accepted.

Please contact:

Denis Kania  
1536 Preston Road  
Naperville, IL 60563.

### **BINOCULARS REPAIRED**



**ALL MAKES AND MODELS**  
Estimates: No Cost or Obligation  
Herb Koehler - Owner  
Binocular Technician 44 years

#### **TELE-OPTICS**

5514 Lawrence Avenue  
Chicago, IL 60630  
(312) 238-7757

---

## SUBSCRIPTION INFORMATION

---



Members of the Illinois Ornithological Society receive *Meadowlark*, the quarterly journal, plus *Wings Over The Prairie*, the IOS newsletter. Members are also invited to special field trips, the annual meeting, and other IOS functions.

To join or send a gift subscription, send your name or that of the gift recipient, address, and telephone number along with fee to:

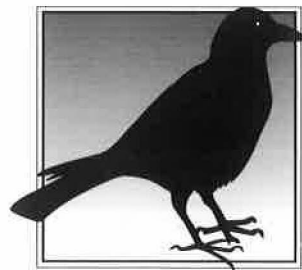
IOS  
P.O. Box 1971  
Evanston, IL 60204-1971.

Back issues of Volume 1 are still available for \$5 each.

Fees: Individual \$20; Family \$30; Full-time student \$10; Contributor \$50 - \$99; Supporter \$100 - \$499; Sponsor \$500.



U P S T A R T



C R O W

... A Unique Store Providing,  
Birding Essentials,  
Accessories and Gifts

2112 Central St. • Evanston  
332-2769(CROW) • 800-404-5959



*Le Conte's Sparrow*

*22 April 1993, Magic Hedge, Montrose Avenue, Cook County.  
Photo by Seymour Rubin.*